

ENR 6 En-Route Charts

En-Route chart ([see page ENR 6.3](#))

Bird Migration Routes and Areas with Sensitive Fauna — Index chart ([see page ENR 6.5](#))

Free Route Airspace South Caucasus (FRASC) chart ([see page ENR 6.7](#))

Fig.3. Military Training Areas — Index chart

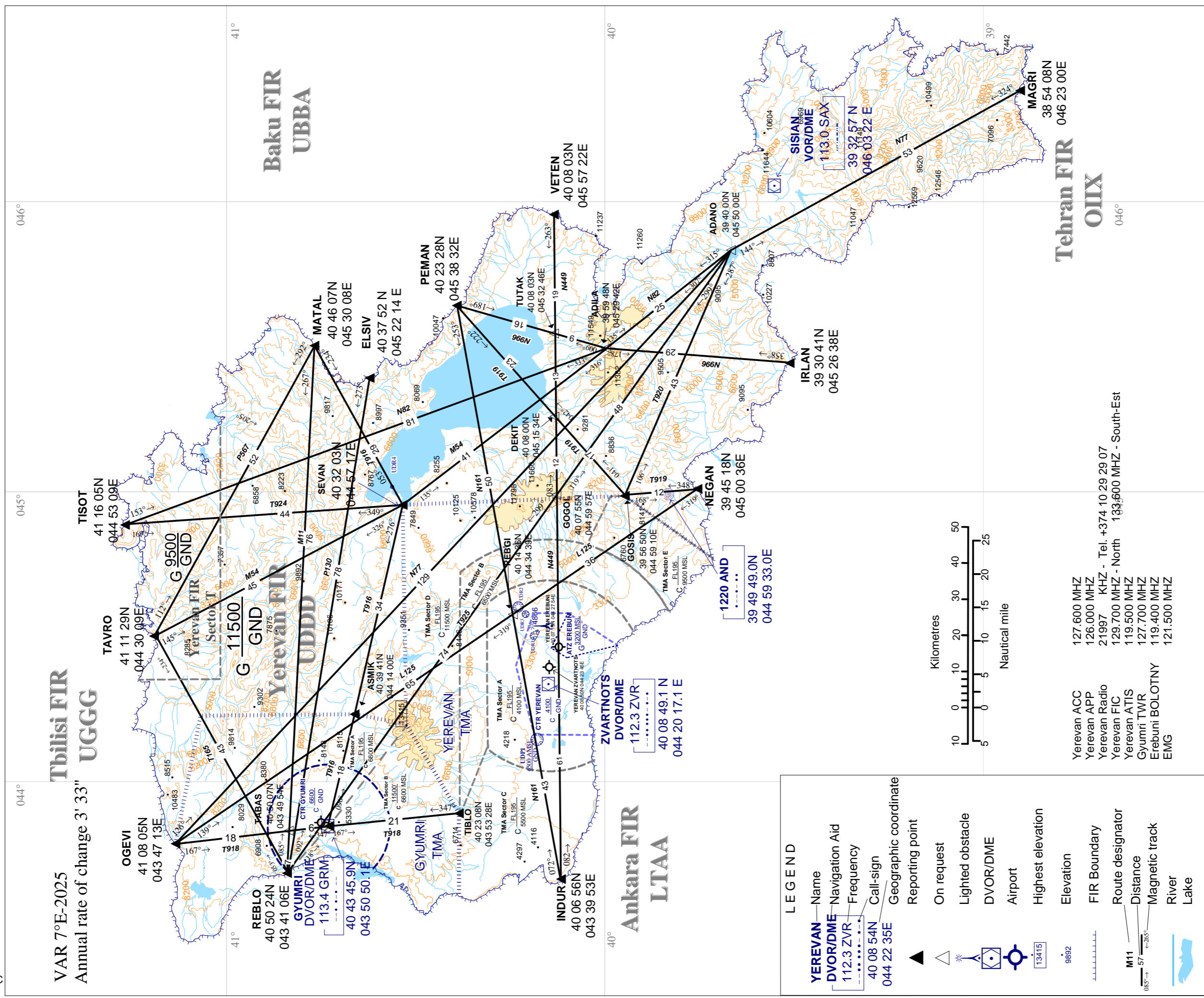
Under preparation.

Fig.4. Prohibited, Restricted and danger areas — Index chart

Under preparation.

PAGE INTENTIONALLY LEFT BLANK

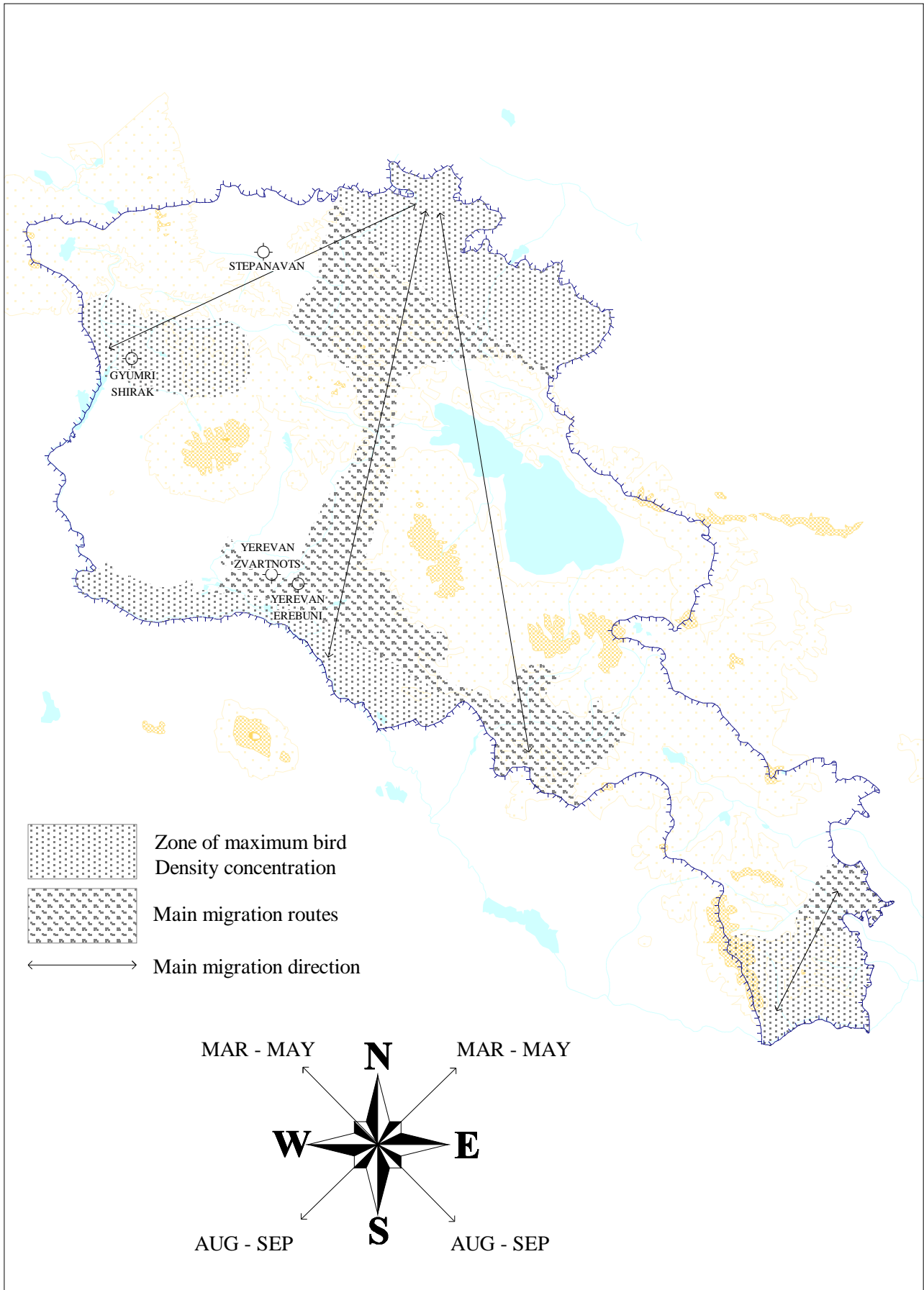
EN-ROUTE CHART



CHANGE: NEW VORDME SAX

PAGE INTENTIONALLY LEFT BLANK

ENR 5.6 BIRD MIGRATION/CONCENTRATION AND AREAS WITH SENSITIVE FAUNA



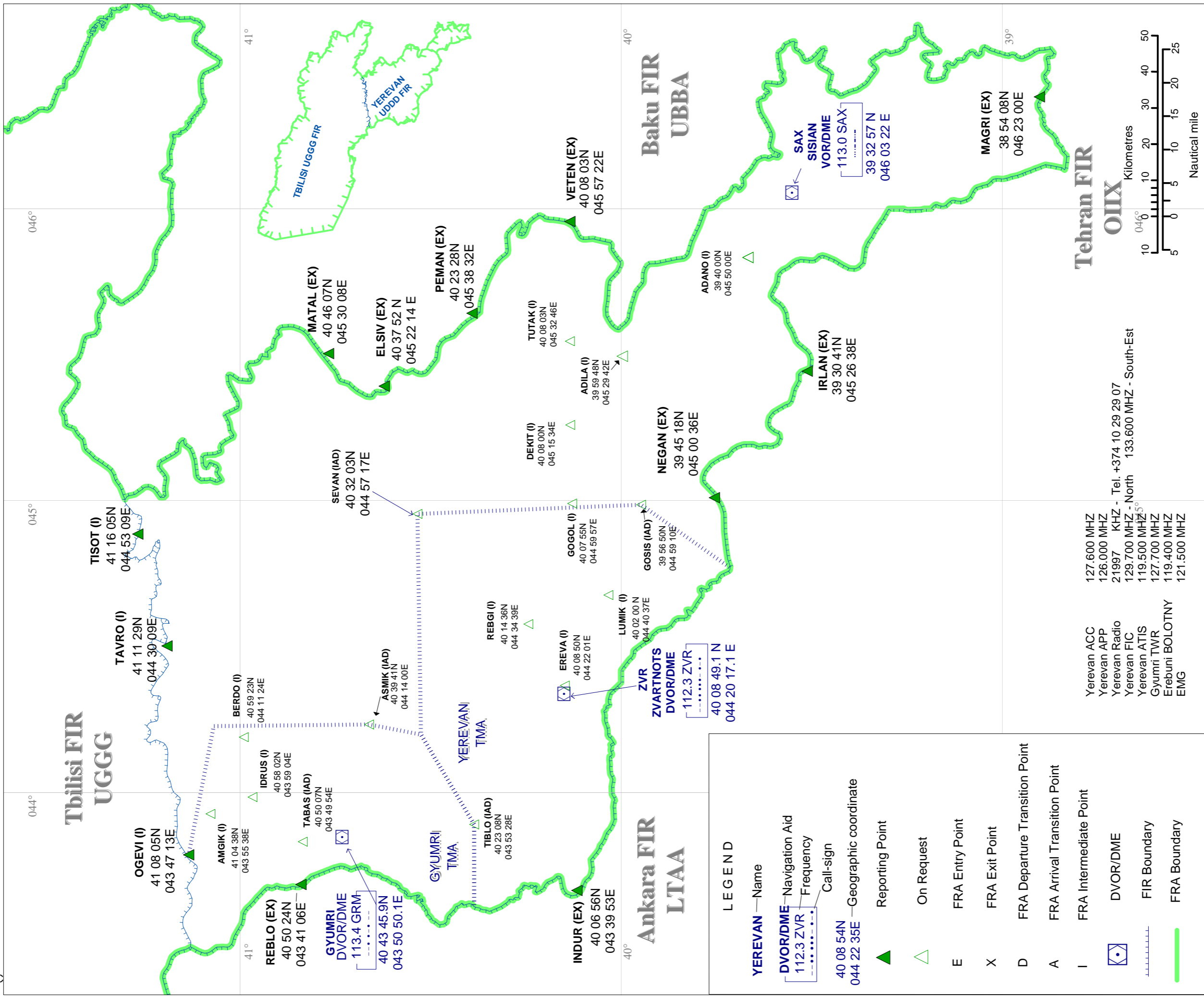
PAGE INTENTIONALLY LEFT BLANK

FREE ROUTE AIRSPACE SOUTH CAUCASUS (FRASC)

VERTICAL LIMITS:
FL195-FL660

OPERATIONAL HOURS:
H24

AIP
Armenia



LEGEND

- YEREVAN** — Name
- DVOR/DME** — Navigation Aid
- 112.3 ZVR** — Frequency
- 113.4 GRM** — Call-sign
- 40 08 54N** — Geographic coordinate
- 044 22 35E** — Geographic coordinate
- ▲** — Reporting Point
- △** — On Request
- E** — FRA Entry Point
- X** — FRA Exit Point
- D** — FRA Departure Transition Point
- A** — FRA Arrival Transition Point
- I** — FRA Intermediate Point
- Navigation Aid
- Frequency
- Call-sign
- Geographic coordinate
- Reporting Point
- On Request
- FRA Entry Point
- FRA Exit Point
- FRA Departure Transition Point
- FRA Arrival Transition Point
- FRA Intermediate Point
- DVOR/DME
- FIR Boundary
- FRA Boundary

CHANGE: NEW VOR/DME SAX

PAGE INTENTIONALLY LEFT BLANK