

AD 2 Aerodromes**UDYZ — YEREVAN / Zvartnots****UDYZ AD 2.1 Aerodrome location indicator and name**

UDYZ — YEREVAN / Zvartnots

UDYZ AD 2.2 Aerodrome geographical and administrative data

1	<i>ARP coordinates and site at AD</i>	40 08 50N 044 23 45E at the center of the RWY
2	<i>Direction and distance from (city)</i>	10 KM west from city Yerevan
3	<i>Elevation/Reference temperature</i>	2838 FT 30° C
4	<i>Geoid undulation at AD ELEV PSN</i>	-72 FT
5	<i>MAG VAR/Annual change</i>	7 ° E 2025/0.06°
6	<i>AD Administration, address, telephone, telefax, telex, AFS,SITA</i>	Post: "Zvartnots" Airport Administration Yerevan – 42 Republic of Armenia Tel:+ 37410 493000, (internal 7112) Fax:+ 37410 493000, (internal 7112) AFS:UDYZDYX SITA:EVNOPXH
7	<i>Types of traffic permitted (IFR/VFR)</i>	IFR/VFR
8	<i>Remarks</i>	Nil

UDYZ AD 2.3 Operational hours

1	<i>AD Administration</i>	H 24
2	<i>Customs and immigration</i>	H24
3	<i>Health and sanitation</i>	H24
4	<i>AIS Briefing Office</i>	H24
5	<i>ATS Reporting Office (ARO)</i>	H24
6	<i>MET Briefing Office</i>	H24
7	<i>ATS</i>	H24
8	<i>Fuelling</i>	H24
9	<i>Handling</i>	H24
10	<i>Security</i>	H24
11	<i>De-icing</i>	H24
12	<i>Remarks</i>	Local time = UTC + 4 hours

UDYZ AD 2.4 Handling services and facilities

1	<i>Cargo-handling facilities</i>	All modern facilities handling weights up to 5 tones.
2	<i>Fuel/oil types</i>	TS – 1 (equivalent Jet A-1), Oil, MK – 8
3	<i>Fuelling facilities/capacity</i>	Refueling facilities available, without limitation
4	<i>De-icing facilities</i>	Available
5	<i>Hangar space for visiting aircraft</i>	NIL
6	<i>Repair facilities for visiting aircraft</i>	AVBL at ACFT repair base.
7	<i>Remarks</i>	Tranzit Communication Frequency 131:800 MHz

UDYZ AD 2.5 Passenger facilities

1	<i>Hotels</i>	In the city
2	<i>Restaurants</i>	At AD and in the city.
3	<i>Transportation</i>	Buses and Taxis
4	<i>Medical facilities</i>	First aid at AD. Hospitals in the city.
5	<i>Bank and Post Office</i>	At AD and in the city
6	<i>Tourist Office</i>	In the city
7	<i>Remarks</i>	Nil

UDYZ AD 2.6 Rescue and fire fighting services

1	<i>AD category for fire fighting</i>	Category 9
2	<i>Rescue equipment</i>	Available
3	<i>Capability for removal of disabled aircraft</i>	Not available
4	<i>Remarks</i>	Operation department Shift Manager is coordinator for crashed aircraft removal procedure and he is also the head of ARFF works. Tel: 00374 93600571; 00374 10493000 ext 7279 Discrete emergency frequency communication with ARFF 131.800 MHz upon request via ATC.

UDYZ AD 2.7 Seasonal availability - clearing

1	<i>Types of clearing equipment</i>	1 Snow Blower, 3 Snow Ploughs, 1 Scrapers, 1 Sand Spreader
2	<i>Clearance priorities</i>	<ol style="list-style-type: none"> 1. RWY, TWY A, B, C, D, main, 10 meters strip from each edge of the RWY, ILS zone, edge lighting of the RWY. 2. All stands, 10 meters from each edge of the TWY-s, Aprons, engine checking stand and TWY A. 3. 25 meters strip from each edge of the RWY and all vehicle movement area.
3	<i>Remarks</i>	I NIL

UDYZ AD 2.8 Aprons, taxiways and check locations data

1	<i>Apron surface and strength</i>	<p>Apron N 1 Stands 1-8, Surface: Concrete Strength: PCN 42/R/C/X/T</p> <p>Apron N 1 Stands 10-14 Surface: Concrete Strength: PCN 100/R/C/X/T</p> <p>Apron N 2 Stands 15-22 Surface: Asphalt/Concrete Strength: PCN 109/F/C/W/T</p> <p>Apron N 2 Stands 23-25 Surface: Asphalt/Concrete Strength: PCN 112/F/C/W/T</p> <p>Apron N 2 Stand 26 Surface: Concrete Strength: PCN 57/R/C/X/T</p> <p>Apron N 2 Stand 27, 27A, 27B, 27C Surface: Asphalt/Concrete Strength: PCN 20/F/C/Y/T</p> <p>Apron N 3 Stands 28-32 Surface: Concrete Strength: PCN 68/R/C/X/T</p>
2	<i>Taxiway width, surface and strength</i>	<p>TWY A Width: 23 M Surface: Asphalt/Concrete Strength: PCN 67/F/A/X/T</p> <p>TWY-s B Width: 23 M Surface: Asphalt/Concrete Strength: PCN 82/F/C/W/T</p> <p>TWY C Width: 23 M Surface: Asphalt/Concrete Strength: PCN 63/R/C/X/T</p> <p>TWY-s D Width: 23 M Surface: Asphalt/Concrete Strength: PCN 82/F/C/W/T</p> <p>Main TWY from TWY D to the Apron N1 – 23 M Surface: Asphalt/Concrete Strength: PCN 82/F/C/W/T</p> <p>Main TWY from TWY A to the Apron N1 – 23 M Surface: Asphalt/Concrete Strength: PCN 67/F/A/X/T</p> <p>Main TWY from TWY D to the TWY C Surface: Asphalt/Concrete Strength: PCN 100/F/C/X/T</p>
3	<i>ACL location and elevation</i>	<p>At Apron N 1 2808 FT</p> <p>At Apron N 2 2821 FT</p>
4	<i>VOR/INS checkpoints</i>	NIL
5	<i>Remarks</i>	Nil

UDYZ AD 2.9 Surface movement guidance and control system and markings

1	<i>Use of aircraft stand ID signs, TWY guide lines and visual docking/parking guidance system of aircraft stands</i>	Taxiing guidance signs at all intersections with TWY and RWY, at all holding positions and ILS critical zone.
2	<i>RWY and TWY markings and LGT</i>	Markings: RWY: THR, TDZ, Center Line, Edge, End as appropriate and fixed distances zone. TWY: Center line, Edge, Holding positions at all TWY/RWY intersections. Lighting: RWY: TDZ, Center Line, Edge, Entry and restricted End as appropriate and fixed distances zone. TWY: Edge.
3	<i>Stop bars</i>	NIL
4	<i>Remarks</i>	NIL

UDYZ AD 2.10 Aerodrome obstacles

AD electronic obstacle data are provided according ICAO ANNEX 15.
See [GEN 3.1](#) for details of how electronic obstacle and terrain data may be obtained.

UDYZ AD 2.11 Meteorological information provided

1	<i>Associated MET Office</i>	ZVARTNOTS
2	<i>Hours of service</i> <i>MET Office outside hours</i>	H24 –
3	<i>Office responsible for TAF preparation</i> <i>Periods of validity</i>	ZVARTNOTS 24 HR
4	<i>Type of landing forecast</i> <i>Interval of issuance</i>	TREND 0.5 HR
5	<i>Briefing/consultation provided</i>	Self-briefing Personal consultation in UDYZ MET office
6	<i>Flight documentation</i> <i>Language(s) used</i>	Charts, abbreviated plain language text English and Russian
7	<i>Charts and other information available for briefing or consultation</i>	S, U, P, SIG WX charts
8	<i>Supplementary equipment available for providing information</i>	Weather Radar Self-briefing terminal
9	<i>ATS units provided with information</i>	Yerevan ACC/APP
10	<i>Additional information (limitation of service, etc.)</i>	See GEN 3.5 for RVR reporting and location of transmissometer.

UDYZ AD 2.12 Runway physical characteristics

Designations RWY NR	TRUE BRG	Dimensions of RWY (M)	Strength (PCN) and surface of RWY and SWY	THR coordinates	THR elevation and highest elevation of TDZ of precision APP RWY
1	2	3	4	5	6
08	89.60°	3850x56	80/R/C/X/T Asphalt/Concrete	400849.75N 0442223.86E	THR 2800ft TDZ 2800ft
26	269.62°	3850x56	80/R/C/X/T Asphalt/Concrete	400850.60N 0442506.48E	THR 2838ft TDZ 2838ft
Slope of RWY-SWY	SWY dimensions (M)	CWY dimensions (M)	Strip dimensions (M)	OFZ	Remarks
7	8	9	10	11	12
See AOC Type A	Nil	400x150	4150x300	According Annex 14	RESA 150m X 112m
See AOC Type A	Nil	300x150	4150x300		RESA 150m X 112m

UDYZ AD 2.13 Declared distances

RWY Designator	TORA (M)	TODA (M)	ASDA (M)	LDA (M)	Remarks
1	2	3	4	5	6
08	3850	4250	3850	3850	Nil
26	3850	4150	3850	3850	Nil

NOTE: TORA of Poket "B" to threshold 26 is 2898m.

UDYZ AD 2.14 Approach and runway lighting

RWY Designator	APCH LGT type LEN INTST	THR LGT colour WBAR	VASIS (MEHT) PAPI	TDZ, LGT LEN	RWY Centre Line LGT Length, spacing colour, INTST	RWY edge LGT LEN, spacing colour, INTST	RWY End LGT colour WBAR	SWY LGT LEN (M) colour	Remarks
1	2	3	4	5	6	7	8	9	10
08	CAT II 900 M LIH	Green	PAPI Left/3° (57FT)	900 M	3850M, 15M from 0m to 2950M White from 2950m to 3550M Red and White from 3550M to 3850M Red, LIH	3850M, 60M, White, LIH Last 600m yellow HIRL	Red	Nil	White FLASH 600M (aprch)
26	NIL	Green	PAPI Left/3.50° (76FT)	NIL	3850M, 15M from 0m to 2950M White from 2950m to 3550M Red and White from 3550M to 3850M Red, LIH	3850M, 60M, White, LIH Last 600m yellow HIRL	Red	Nil	Winnd con (TWY1-24)

UDYZ AD 2.15 Other lighting, secondary power supply

1	<i>ABN/IBN location, characteristics and hours of operation</i>	NIL
2	<i>LDI location and LGT</i>	NIL
	<i>Anemometer location and LGT</i>	NIL
3	<i>TWY edge and centre line lighting</i>	TWY edge and centre line lighting Edge TWY A, B, C, D
4	<i>Secondary power supply/switch-over time</i>	Secondary power supply to all lighting at AD. t=0
5	<i>Remarks</i>	Nil

UDYZ AD 2.16 Helicopter landing area

1	<i>Coordinates TLOF or THR of FATO Geoid undulation</i>	Nil
2	<i>TLOF and/of FATO elevation M/FT</i>	Nil
3	<i>TLOF and FATO area dimensions, surface, strength, marking</i>	Nil
4	<i>True BRG of FATO</i>	Nil
5	<i>Declared distance available</i>	Nil
6	<i>APP and FATO lighting</i>	Nil
7	<i>Remarks</i>	Nil

Note: same as for aircraft.

UDYZ AD 2.17 Air traffic services airspace

1	<i>Designation and lateral limits</i>	YEREVAN CTR 400134N 0440946E – 401111N 0440946E – 401406N 0442359E – 401120N 0443454E – 400552N 0443454E – 395800N 0442815E then along state border with Turkey to 400134N 0440946E, except ATZ Erebuni
2	<i>Vertical limits</i>	4100 FT MSL
3	<i>Airspace classification</i>	C
4	<i>ATS unit call sign</i> <i>Language(s)</i>	YEREVAN Tower English
5	<i>Transition altitude</i>	11500 FT MSL
6	<i>Remarks</i>	Nil

UDYZ AD 2.18 Air traffic services communication facilities

Service designation	Call sign	Frequency	Hours of operation	Remarks
1	2	3	4	5
APP	Yerevan Approach	126.000 MHz 121.500 MHz	H24 H24	Primary frequency, VDF available. Emergency frequency VDF available
TWR	Yerevan Tower	128.0MHz 121.500 MHz	H24 H24	Primary frequency, VDF available. Emergency frequency VDF available
Ground	Yerevan Ground	119.000 MHz	H24	Primary frequency
ATIS (INF)		119.500 MHz	H24	

UDYZ AD 2.19 Radio navigation and landing aids

Type of aid, CAT of ILS/MLS (For VOR/ILS/MLS, give VAR)	ID	Frequency	Hours of operation	Site of transmitting antenna coordinates	Elevation of DME transmitting antenna	Remarks
1	2	3	4	5	6	7
DVOR/DME (7° E 2025)	ZVR	112.300 MHz (CH 70x)	H24	400849.1N 0442017.1E	2849 ft	Coverage FL 100 30 NM
ILS/DME GP 08		334.700 MHz (CH 18x)	H24	400845.9N 0442237.7E	-	3° RDH 52 FT /15.9M 326 M past THR 08 right side 120 M from the centre line
LLZ 08 ILS CAT II (7° E 2025)	IZR	108.100 MHz	H24	400850.7N 0442527.2E	-	491 M beyond THR 26

UDYZ AD 2.20 Local traffic regulations

1 Airport regulations

At Yerevan "Zvartnots" Airport a number of local regulations are applied. The regulations are collected in a manual which is available at the AIS Briefing Office . This manual includes, among other subjects, the following:

- a. information about aircraft stands ;
- b. information about taxiing from aircraft stands;
- c. limitations in the operation of large aircraft including limitations in the use of the aircraft"s own power for taxiing;
- d. information about taxiing to aircraft stands;
- e. information about engine start-up positions;

Information about the regulations for taxiing can be obtained from Yerevan Ground.

When a local regulation is important for the safe operation of aircraft on the apron, Yerevan Ground gives information to each aircraft.

2 Taxiing to and from stands

Arriving aircraft is allocated a stand number by Yerevan Ground.

Taxiing of aircraft will be guided by "FOLLOW-ME" vehicle only by crew request or in low visibility condition.

Departing aircraft obtains pushback, engine start-up clearance and taxi instruction from Yerevan Ground on 119.000 MHZ.

3 Parking area for small aircraft (General aviation)

NIL

4 Parking area for helicopters

NIL

5 Apron — taxiing during winter conditions

NIL

6 Taxiing — limitations

Information concerning limitation for use of TWY and Apron of large aircraft is given to each aircraft from Yerevan Ground.

7 School and training flights — technical test flights — use of runways

School and training flights must be made only after permission thereto has been obtained from ATS authority.

8 Helicopter traffic — limitation

NIL

9 Removal of disabled aircraft from runways

In case when the aircraft is wrecked on a runway, it is removed from the runway by the Airline operating the aircraft as quickly as possible.

Airdrome Operator will have its participation according to the point 2.13 of Emergency Response Plan of Zvartnots airport.

Information about coordinator is available in AIP UDYZ AD2.6.

UDYZ AD 2.21 Noise abatement procedures

There are established noise preferable routes, practically allowing inbound and outbound aircraft, to avoid flights above aerodrome adjacent areas susceptible to noise:

- I. As preferable Runway 08 for approach and Runway 26 for take-off are considered.
- II. In case of take-off from the Runway 26, turn is performed up to or after over-flight above city Etchmiadzin. It is not permitted to over-flight above city Etchmiadzin on the low levels.
- III. Take-off from the Runway 08 (above Yerevan) is permitted in the presence of meteorological condition.
- IV. Take-off carried out using noise abatement procedure for the area according to Aircraft Operation Manual.
- V. More than idle reverse shall not be used except for reasons (e.g. tailwind, wet or contaminated runway and/or required landing distance close to runway length) 18.00-03.00 UTC.
- VI. Engine test (Idle Power and Run-ups) cannot be used 18.00-03.00 UTC.

UDYZ AD 2.22 Flight procedures

General

Unless special permission has been obtained from Yerevan Approach or Yerevan Tower as appropriate, flight within Yerevan TMA and Yerevan CTR shall be in accordance with the Instrument Flight Rules.

Procedures for IFR flights within Yerevan TMA

The inbound, transit and outbound routes shown on the charts may be varied at the discretion of ATS. If necessary, in case of congestion, inbound aircraft may also be instructed to hold at SEVAN or ZVR or LUMIK in accordance with RWY in use

Radar procedures within Yerevan TMA

Radar vectoring and sequencing

From SEVAN, GOSIS, TIBLO and INDUR begin STARs to the IAF to RWY 08 (ILS/DME, DVOR/DME and RNP (GNSS)) and RWY26 (RNP (GNSS)) so as to ensure an expedite flow of traffic. Radar vectors and flight levels/altitudes will be issued, as required, for spacing and separating the aircraft, so that the correct landing intervals are maintained, taking into account aircraft characteristics.

Radar vectoring chart see [UDYZ AD 2-2.13](#)

Surveillance radar approaches

NIL

Precision radar approach

NIL

Communication failure

In case of communication failure, the pilot shall act in accordance with the communication failure procedures in *ICAO Doc. 7030*.

Procedures for VFR flights within Yerevan TMA

See [ENR 1.2](#).

Procedures for VFR flights within YerevanCTR

See [ENR 1.2](#).

Advisory considerations in case of engine inoperative after take-off from AD Zvartnots

In case of engine failure/fire after take-off, each operator is responsible for developing an emergency approach procedure. It is advisable to take into account the local circumstances outlined below

1. All maneuvers have to be executed only South of aerodrome, but not further than 4NM.
2. The maneuver zone safe altitude in IMC is 5100FT, in VMC is 4400FT.
3. After take-off from THR08 initiate Right side maneuver at ZVR D5.5/R083° or at 3300FT AMSL, whichever is earlier.
4. After take-off from THR26 initiate Left side maneuver at ZVR D0.5/R263° or at 3300FT AMSL, whichever is earlier.
5. During approach to RWY26 do not cross Arc ZVR D8.6NM (East of aerodrome).
6. During approach to RWY08 do not cross Arc ZVR D11NM (West of aerodrome).

UDYZ AD 2.23 Additional information

Restriction on RWY 08/26

- 180 degree turn of the aircraft on the RWY 08/26 is forbidden, except at the RWY turn pad.
- Pocket A-3750m from the Northern Side of the Runway by 26 threshold, 263 MC.
- Pocket B-2900m from the Southern Side of the Runway by 26 threshold, 263 MC.

Bird concentrations in the vicinity of the airport

Ornithological situation around the aerodrome can be conditioned by seasonal and daily migration of birds. Majority of them fly at 100 – 600 meters above ground level. There is a river (Sev-Jur) in the South of the aerodrome territory. There are artificial pools developed by fish industry where wild ducks are living during the whole year.

Daybreak and seasonal migration of birds can be considered as the most vulnerable period. During dark time of the day the birds are forming large dispersed accumulations increasing the risk of collision. Availability of agricultural holdings is favorable for carrion crows and pigeons .

It is recommended to switch on landing headlight crossing the area of the aerodrome at take-off, approach as well as during climb and letdown. Maximum transmigration in the vicinity of the aerodrome is at 9, 16, 20 o'clock. Most of the birds fly at the height of 200-1500m. Some birds don't fly more than 1 km above the ground. Only some kinds of birds, especially the wild ones, are able to fly at the height of 3-5 km. The speed of the birds' flight vibrates from 15 to 100 km/hour. During the maximum activity of the birds in the vicinity of the airdrome, visual and radar monitoring of the ornithological situation is organized.

The results of monitoring are informed to the controller, who, in case of dangerous ornithological situation, should:

- a. take measures to scare the birds, which prevent the landing (take-off)
- b. inform the crew about the existence of birds in the sector of landing (take-off)
- c. permit landing or departure, send the aircraft to holding pattern or around again
- d. if it is not possible to make a landing at the airdrome "Zvartnots", the controller sends the aircraft to the alternate airdrome.

Regular visual observation is done at the airdrome for the ornithological condition before take-off and landing. Receiving an information about dangerous ornithological condition in the airdrome, the crew observes the air condition and, if necessary, makes maneuver for avoiding a dangerous area or maintains controller instruction.

An automatically transmitting system of operative and meteorological information (ATIS) for aircraft is functioning at Yerevan "Zvartnots" airdrome. Special measures are being undertaken regularly by switching on bioacoustic systems "Fenix" with sound effects. Guns perform additional frightening.

De icing

De icing stands is 25 and 26

The aircraft entrance to stand N25 is intended from the main with the help of engine tow or push back track through the stand N24.

Aircraft entrance to positions N26 is intended from the main line with the help of engine tow or push back track.

During taxiing from the main line to stand N25 stand N24 should be free.

During the taxiing of aircrafts from stand N25 to the main line stand N24 should be free.

Exit from stand N25 and N26 to the main line is realized with the help of engine tow or push back track.

HOT SPOT

HS-1 During taxiing from Apron No2 parking positions 0, 15-22 to Main TWY instead of taxiing by ATWY "Z" (ZULU) some aircrafts mistakenly steered towards parking positions 27B, 27C.

UDYZ AD 2.24 Charts related to an aerodrome

- Aerodrome ground Movement and Aircraft Parking Chart — ICAO ([see page UDYZ AD 2.2-1](#))
- Aerodrome Chart — ICAO ([see page UDYZ AD 2.2-3](#))
- Aerodrome Obstacle Chart — ICAO Type A ([see page UDYZ AD 2.2-5](#))
- Precision Approach Terrain chart — ICAO ([see page UDYZ AD 2.2-7](#))
- Area Chart — ICAO ([see page UDYZ AD 2.2-9](#))
- List Of Coordinates For RVA Yerevan TMA ([see page UDYZ AD 2.2-11](#))
- ATC Surveillance Minimum Altitude Chart - ICAO ([see page UDYZ AD 2.2-13](#))
- Standard Departure Route — Instrument SID RNAV1 (GNSS) RWY 08 ([see page UDYZ AD 2.2-15](#))
- Standard Departure Route — Instrument SID RNAV1 (GNSS) RWY 08 ([see page UDYZ AD 2.2-17](#))
- Standard Departure Route — Instrument SID RNAV1 (GNSS) RWY 08 ([see page UDYZ AD 2.2-19](#))
- Standard Departure Chart Instrument SID — ICAO RNAV1 (GNSS) RWY 08 ([see page UDYZ AD 2.2-21](#))
- Standard Departure Route — Instrument SID RNAV1 (GNSS) RWY26 ([see page UDYZ AD 2.2-23](#))
- Standard Departure Route — Instrument SID RNAV1 (GNSS) RWY26 ([see page UDYZ AD 2.2-25](#))
- Standard Departure Route — Instrument SID RNAV1 (GNSS) RWY26 ([see page UDYZ AD 2.2-27](#))
- Standard Departure Chart Instrument SID — ICAO RNAV1 (GNSS) RWY 26 ([see page UDYZ AD 2.2-29](#))
- Standard Arrival Route — Instrument STAR RNAV1 (GNSS) RWY08 ([see page UDYZ AD 2.2-31](#))
- Standard Arrival Route — Instrument STAR RNAV1 (GNSS) RWY08 ([see page UDYZ AD 2.2-33](#))
- Standard Arrival Route — Instrument STAR RNAV1 (GNSS) RWY08 (Waypoint Data/List) ([see page UDYZ AD 2.2-35](#))
- Standard Arrival Chart - Instrument STAR — ICAO RNAV1 (GNSS) RWY 08 ([see page UDYZ AD 2.2-37](#))
- Standard Arrival Route — Instrument STAR RNAV1 (GNSS) RWY26 ([see page UDYZ AD 2.2-39](#))
- Standard Arrival Route — Instrument STAR RNAV1 (GNSS) RWY26 ([see page UDYZ AD 2.2-41](#))
- Standard Arrival Route — Instrument STAR RNAV1 (GNSS) RWY26 (Waypoint Data/List) ([see page UDYZ AD 2.2-43](#))
- Standard Arrival Chart — Instrument STAR — ICAO RNAV1 (GNSS) RWY 26 ([see page UDYZ AD 2.2-45](#))
- Instrument Approach Chart — ICAO ILS/DME RWY 08 ([see page UDYZ AD 2.2-47](#))
- Instrument Approach Chart — ICAO DVOR/DME RWY 08 ([see page UDYZ AD 2.2-49](#))
- RNP RWY 08 INSTRUMENT APPROACH (LNAV/VNAV) - Route Data ([see page UDYZ AD 2.2-51](#))
- RNP RWY 08 INSTRUMENT APPROACH (LNAV/VNAV) - (Waypoint Data/ List) ([see page UDYZ AD 2.2-53](#))

Instrument Approach Chart — ICAO RNP RWY08 (LNAV/VNAV) ([see page UDYZ AD 2.2-55](#))

Circle-To-Land RWY 26 ([see page UDYZ AD 2.2-57](#))

RNP Z RWY26 INSTRUMENT APPROACH (LNAV only)- (Route Data) ([see page UDYZ AD 2.2-59](#))

RNP Z RWY26 INSTRUMENT APPROACH (LNAV only) - (Waypoint Data/List) ([see page UDYZ AD 2.2-61](#))

Instrument Approach Chart — ICAO RNP Z RWY 26 (LNAV only) ([see page UDYZ AD 2.2-63](#))

RNP (GNSS) Y RWY 26 Instrument Approach (LNAV only) - (Route Data) ([see page UDYZ AD 2.2-65](#))

RNP (GNSS) Y RWY26 Instrument Approach (LNAV only) - (Waypoint Data/List) ([see page UDYZ AD 2.2-67](#))

Instrument Approach Chart — ICAO RNP Y RWY 26 (LNAV only) ([see page UDYZ AD 2.2-69](#))

Visual Approach Chart — ICAO RWY 08/26 ([see page UDYZ AD 2.2-71](#))

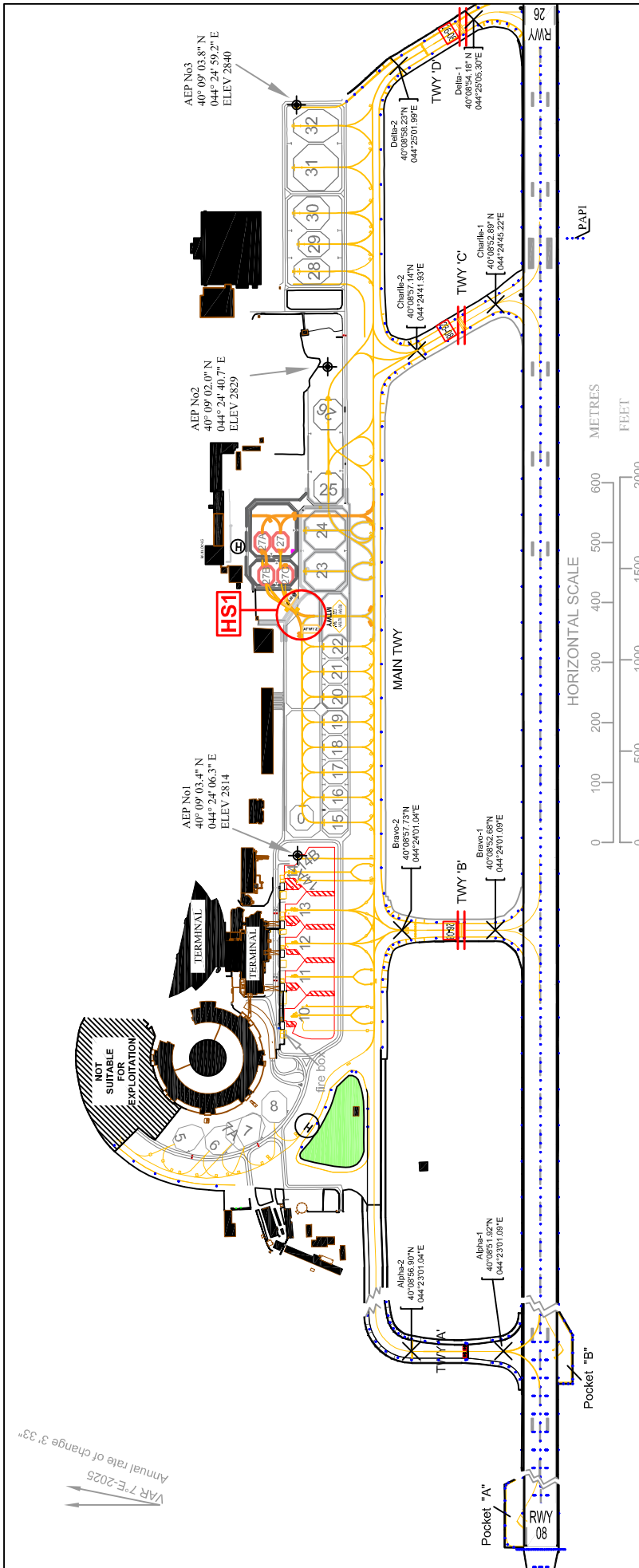
PAGE INTENTIONALLY LEFT BLANK

**AERODROME GROUND MOVEMENT
AND AIRCRAFT PARKING CHART-ICAO**

GND 119.0
TWR 128.0

YEREVAN/ZVARTNOTS

CHANGE: TWY A, HOT SPOT 1



STAND	Latitude	Longitude	STAND	Latitude	Longitude
0	40° 09' 03.19" N	044° 24' 09.72" E	16	40° 09' 02.01" N	044° 24' 10.37" E
1	40° 09' 12.24" N	044° 23' 52.28" E	17	40° 09' 02.02" N	044° 24' 12.14" E
2	40° 09' 12.01" N	044° 23' 50.24" E	18	40° 09' 02.03" N	044° 24' 13.91" E
3	40° 09' 11.27" N	044° 23' 48.48" E	19	40° 09' 02.05" N	044° 24' 15.68" E
4	40° 09' 09.97" N	044° 23' 47.24" E	20	40° 09' 02.07" N	044° 24' 17.47" E
5	40° 09' 08.50" N	044° 23' 46.69" E	21	40° 09' 02.07" N	044° 24' 19.24" E
6	40° 09' 06.98" N	044° 23' 46.91" E	22	40° 09' 02.09" N	044° 24' 21.00" E
7	40° 09' 05.56" N	044° 23' 47.93" E	23	40° 09' 03.08" N	044° 24' 26.31" E
7A	40° 09' 05.50" N	044° 23' 47.84" E	24	40° 09' 03.09" N	044° 24' 29.17" E
8	40° 09' 04.60" N	044° 23' 49.52" E	25	40° 09' 01.90" N	044° 24' 33.15" E
10	40° 09' 03.59" N	044° 23' 55.00" E	26	40° 09' 01.93" N	044° 24' 38.35" E
10A	40° 09' 03.27" N	044° 23' 54.96" E	27	40° 09' 01.46" N	044° 24' 27.79" E
10B	40° 09' 02.86" N	044° 23' 55.61" E	27A	40° 09' 05.44" N	044° 24' 27.78" E
11	40° 09' 03.76" N	044° 23' 57.70" E	27B	40° 09' 05.22" N	044° 24' 26.56" E
12	40° 09' 03.67" N	044° 24' 00.05" E	27C	40° 09' 04.19" N	044° 24' 26.57" E
13	40° 09' 03.61" N	044° 24' 02.40" E	28	40° 09' 03.54" N	044° 24' 47.44" E
14	40° 09' 03.67" N	044° 24' 05.09" E	29	40° 09' 03.55" N	044° 24' 49.36" E
14A	40° 09' 03.21" N	044° 24' 04.49" E	30	40° 09' 03.80" N	044° 24' 51.54" E
14B	40° 09' 03.16" N	044° 24' 06.05" E	31	40° 09' 03.83" N	044° 24' 54.76" E
15	40° 09' 02.00" N	044° 24' 08.60" E	32	40° 09' 03.85" N	044° 24' 57.69" E

WARNING:
1. Non-operational sections of the aerodrome elements Apron-1 / 1-4 stands
2. Exit from aircraft stand 15-22 to main TWY is via apron 2 between aircraft stands 22 and 23.

STANDS:
Apron-1
1-8 parking positions / A321-100 /
10-14 parking positions / B767-300/
15-22 parking positions / A350-1000 /
10A, 10B, 14A, 14B parking positions / B-737-500 /
Apron-2
15-22 parking positions / A-320 - 200 and smaller/
23-24 parking positions / A-330-300 and smaller/
27, 27A, 27B, 27C parking position / CRJ-200 and smaller;
Apron-3
28 parking position / A-321-100 and smaller /
29 parking position / A321-100 and smaller /
30 parking position / IL-76 and smaller /
31 parking position / B-747 and smaller /
32 parking position / IL-76 and smaller

LEGEND
Lights (RWY, TWY, MTWY and etc.)
Aircraft parking position marking
Taxiway lines, shoulders marking
Aircraft stand
Buildings
RWY holding position
ATC service boundary
For departure - holding position (ILS line)
For arrival - runway exemption position by aircraft
Apron safety lines
Areas not suitable for exploitation
Apron elevation points (AEP)
Taxiway centre line points
HOT SPOT (HS1)

PAGE INTENTIONALLY LEFT BLANK

CHANGE: TWY A

ARMENIA
YEREVAN / International

GND 119.0
TWR 128.0

AD ELEV
2838'

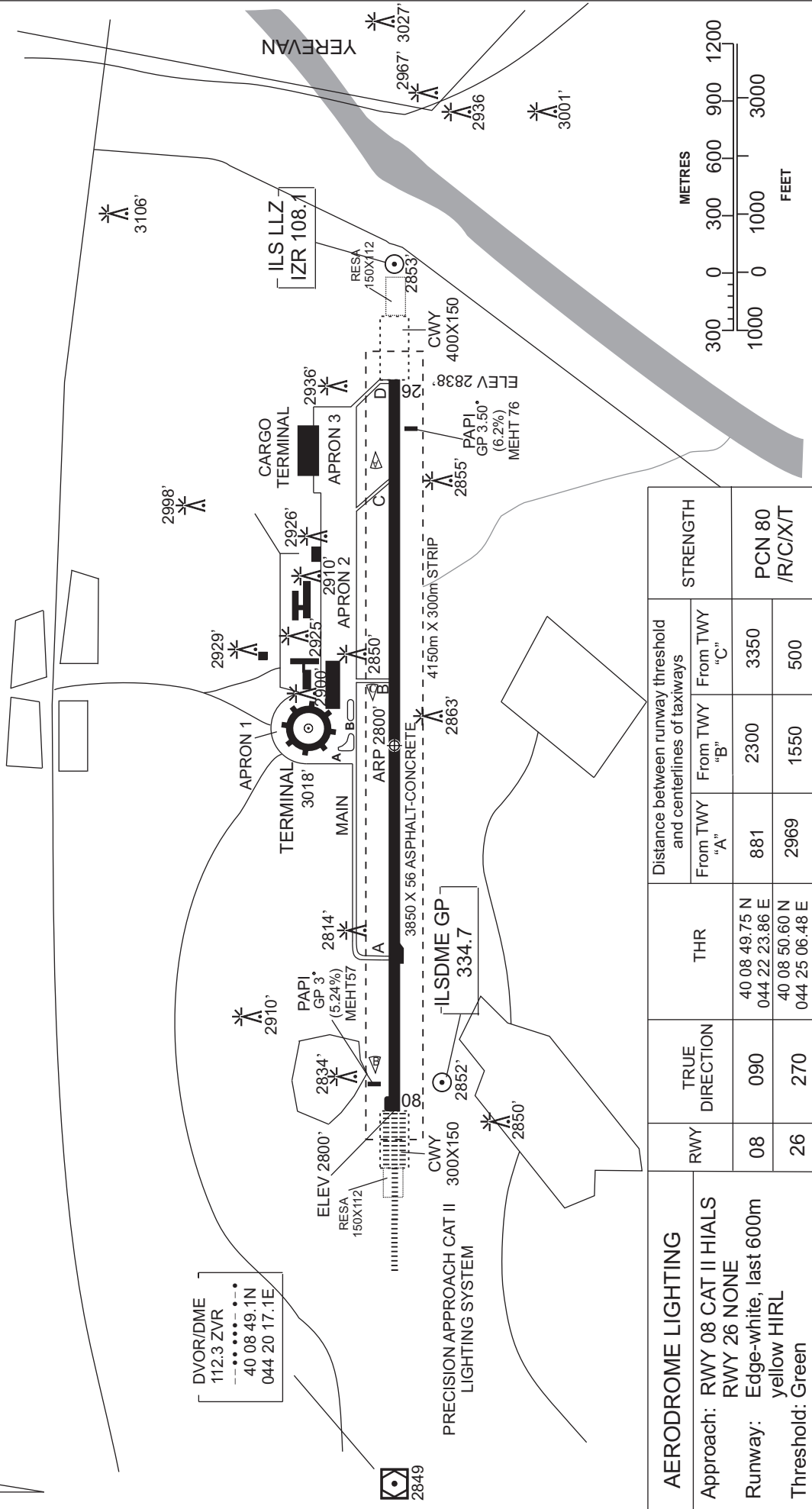
ARP
40 08 50.19 N
044 23 45.17 E

AERODROME
CHART - ICAO

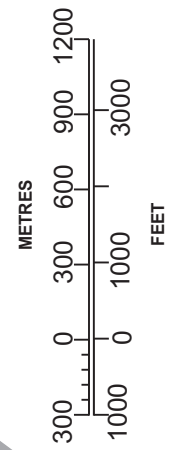
VAR 7°E-2025

Annual rate of change 3' 33"

DVOR/DME
112.3 ZVR
40 08 49.1N
044 20 17.1E



AERODROME LIGHTING	RWY	TRUE DIRECTION	THR	Distance between runway threshold and centerlines of taxiways			STRENGTH
				From TWY "A"	From TWY "B"	From TWY "C"	
Approach: RWY 08 CAT II HIALS RWY 26 NONE	08	090	40 08 49.75 N 044 22 23.86 E	881	2300	3350	PCN 80 /R/C/X/T
Runway: Edge-white, last 600m yellow HIRL Threshold: Green	26	270	40 08 50.60 N 044 25 06.48 E	2969	1550	500	



PAGE INTENTIONALLY LEFT BLANK

DIMENSIONS IN METERS
ELEVATION IN FEET

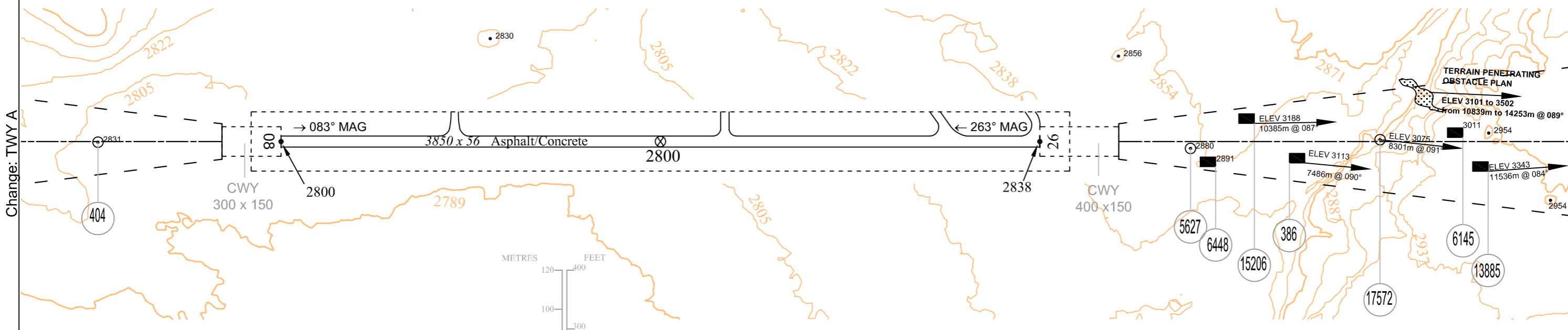
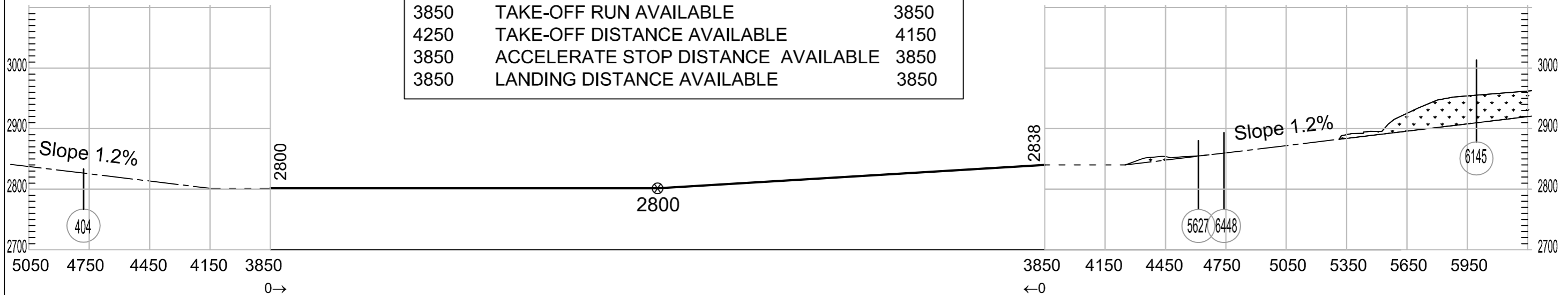
AERODROME OBSTACLE CHART-ICAO
TYPE A (OPERATING LIMITATIONS)

YEREVAN/ZVARTNOTS

MAGNETIC VARIATION +7°E
Annual rate of change 3' 33"

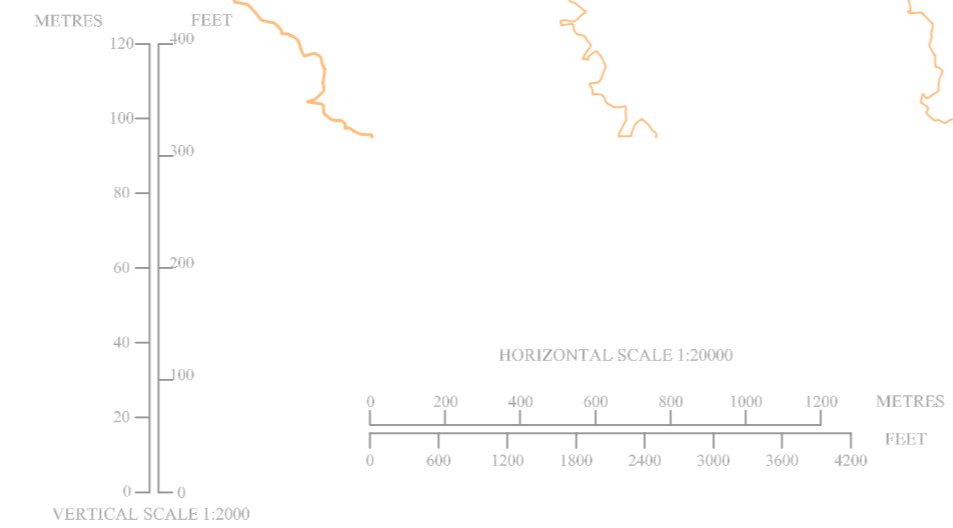
RWY08/26

DECLARED DISTANCES		
RWY08		RWY26
3850	TAKE-OFF RUN AVAILABLE	3850
4250	TAKE-OFF DISTANCE AVAILABLE	4150
3850	ACCELERATE STOP DISTANCE AVAILABLE	3850
3850	LANDING DISTANCE AVAILABLE	3850



Change: TWY A

LEGEND	
DISTANCE AND T.BEARING FROM THE END OF THE RUNWAY FARTHEST REMOVED AND THE ELEVATION	ELEV 3113 7486m @ 092°
IDENTIFICATION NUMBER	006
BUILDINGS	■
ANTENA, POLE	⊙
TERRAIN PENETRATING OBSTACLE PLAN	▨
TERRAIN CONTOUR	~
ELEVATION	5200



AMENDMENT RECORD		
N	DATE	ENTERED BY
702	11.10.2018	Removed by AIS

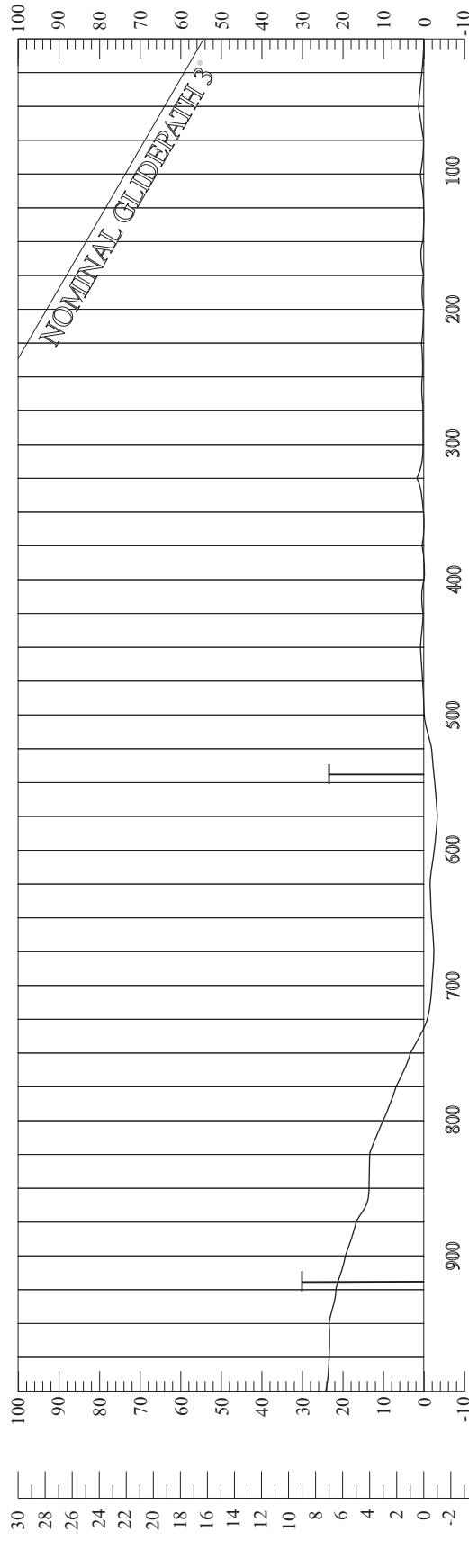
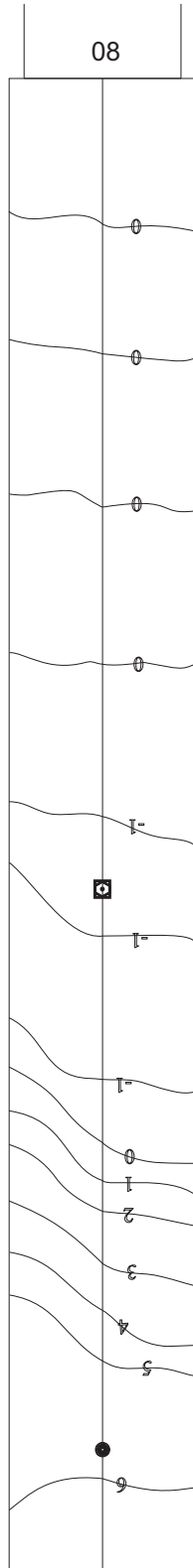
ORDER OF ACCURACY
HORIZONTAL 5M
VERTICAL 1.5 F

PAGE INTENTIONALLY LEFT BLANK

CHANGE: MAG VAR, RWY's Designation

ARMENIA
YEREVAN/INTERNATIONAL
RWY 08

DISTANCES IN METRES
HEIGHTS IN FEET



VERTICAL SCALE IN METRES

VERTICAL SCALE IN FEET

HORIZONTAL SCALE 1:5000
VERTICAL SCALE 1:500

CONTOURS AND HEIGHTS ARE RELATED TO ELEVATION OF RWY THR

LEGEND

CONTOUR

CENTRE-LINE PROFILE



AMENDMENT RECORD	
N°	ENTERED BY
1	25.09.95 Amend N° 263
2	24.11.05 AIRAC AMDT 04/05

PAGE INTENTIONALLY LEFT BLANK

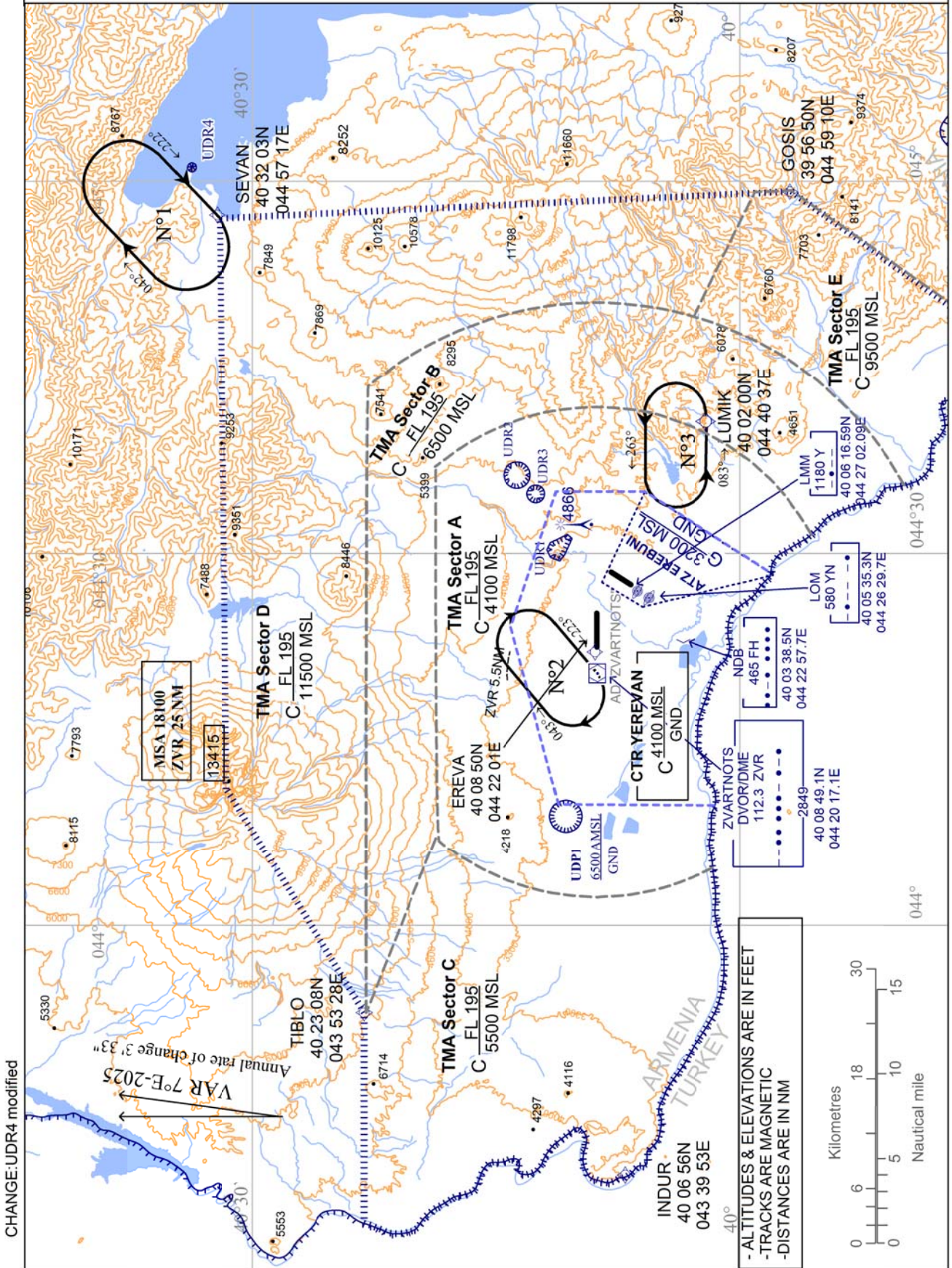
AREA CHART - ICAO

ATIS 119.5
YEREVAN / APP 126.0
YEREVAN / TOWER 128.0
YEREVAN / GROUND 119.0
EREBUNI / BOLOTNY 119.4

HOLDING PATTERNS

N1 - FL140 - FL220 SEVAN
N2 - 7000 - FL140 ZVR
N3 - 9200 - FL140 LUMIK

YEREVAN TMA



PAGE INTENTIONALLY LEFT BLANK

LIST OF COORDINATES FOR RVA YEREVAN TMA

Number Sector	Coordinate	Altitude/FL (In use -15°C and above) Altitude/FL (In use below -15°C)
1	40 01 45N 044 04 34E- 40 10 58N 044 02 29E- 40 09 50N 044 06 05E- 40 09 50N 044 26 45E- 40 08 03N 044 29 30E- 40 06 30N 044 28 02E- 39 57 31N 044 29 41E- then along state border with Turkey to 40 01 45N 044 04 34E	5100 5400
2	40 15 30N 043 40 37E- 40 15 30N 044 12 38E- 40 09 50N 044 12 38E- 40 09 50N 044 06 05E- 40 10 58N 044 02 29E- 40 01 45N 044 04 34E- then along state border with Turkey to 40 15 30N 043 40 37E	7000 7000
3	40 09 50N 044 12 38E- 40 15 00N 044 12 38E- 40 15 00N 044 21 21E- 40 14 09N 044 23 50E- 40 14 10N 044 27 30E- 40 13 30N 044 28 00E- 40 09 50N 044 26 45E- 40 09 50N 044 12 38E-	5700 6100
4	40 23 08N 043 36 35E- 40 23 08N 043 54 50E- 40 21 00N 043 56 37E- 40 15 30N 043 56 35E- 40 15 30N 043 40 37E- then along state border with Turkey to 40 23 08N 043 36 35E	9000 9000
5	40 23 08N 043 53 28E- 40 25 39N 043 59 01E- 40 21 00N 044 05 57E- 40 21 00N 043 56 37E- 40 23 08N 043 54 50E- 40 23 08N 043 53 28E-	FL130 FL140
6	40 21 00N 044 05 57E- 40 25 39N 043 59 01E- 40 31 30N 044 11 56E- 40 31 39N 044 22 00E- 40 27 14N 044 22 00E- 40 21 01N 044 14 28E 40 21 00N 044 05 57E	FL160 FL180
7	40 21 01N 044 14 28E- 40 27 14N 044 22 00E- 40 31 39N 044 22 00E- 40 32 03N 044 57 17E- 40 25 00N 044 57 40E- 40 25 00N 044 48 50E- 40 19 30N 044 46 32E- 40 23 02N 044 43 19E- 40 23 02N 044 36 44E- 40 21 00N 044 33 20E- 40 21 01N 044 14 28E	FL130 FL140
8	39 55 33N 044 31 26E- 39 59 25N 044 37 26E- 39 56 15N 044 40 00E-	7500 7500

	39 52 38N 044 40 38E- 39 50 03N 044 35 52E- then along state border with Turkey to 39 55 33N 044 31 26E	
9	40 15 30N 043 56 35E- 40 21 00N 043 56 37E- 40 21 00N 044 33 20E- 40 23 02N 044 36 44E- 40 23 02N 044 43 19E- 40 19 30N 044 46 32E- 40 14 32N 044 44 27E- 40 13 30N 044 32 38E- 40 13 30N 044 28 00E- 40 14 10N 044 27 30E- 40 14 09N 044 23 50E- 40 15 00N 044 21 21E- 40 15 00N 044 12 38E- 40 15 30N 044 12 38E- 40 15 30N 043 56 35E	10200 11100
10	40 14 32N 044 44 27E- 40 25 00N 044 48 50E- 40 25 00N 044 57 40E- 39 58 10N 044 59 06E- 40 00 00N 044 53 00E- 40 02 45N 044 48 30E- 40 14 32N 044 44 27E	FL140 FL160
11	40 05 30N 044 32 30E- 40 13 30N 044 32 38E- 40 14 32N 044 44 27E- 40 02 45N 044 48 30E- 39 52 38N 044 40 38E- 39 56 15N 044 40 00E- 40 05 30N 044 32 30E	9200 10000
12	39 57 31N 044 29 41E- 40 06 30N 044 28 02E- 40 08 03N 044 29 30E- 40 09 50N 044 26 45E- 40 13 30N 044 28 00E- 40 13 30N 044 32 38E- 40 05 30N 044 32 30E- 39 59 25N 044 37 26E- 39 55 33N 044 31 26E- 39 57 31N 044 29 41E	6300 6800
13	39 50 03N 044 35 52E- 39 52 38N 044 40 38E- 40 02 45N 044 48 30E- 40 00 00N 044 53 00E- 39 58 10N 044 59 06E- 39 56 50N 044 59 10E- 39 42 50N 044 46 12E- then along state border with Turkey to 39 50 03N 044 35 52E	FL130 FL130

PAGE INTENTIONALLY LEFT BLANK

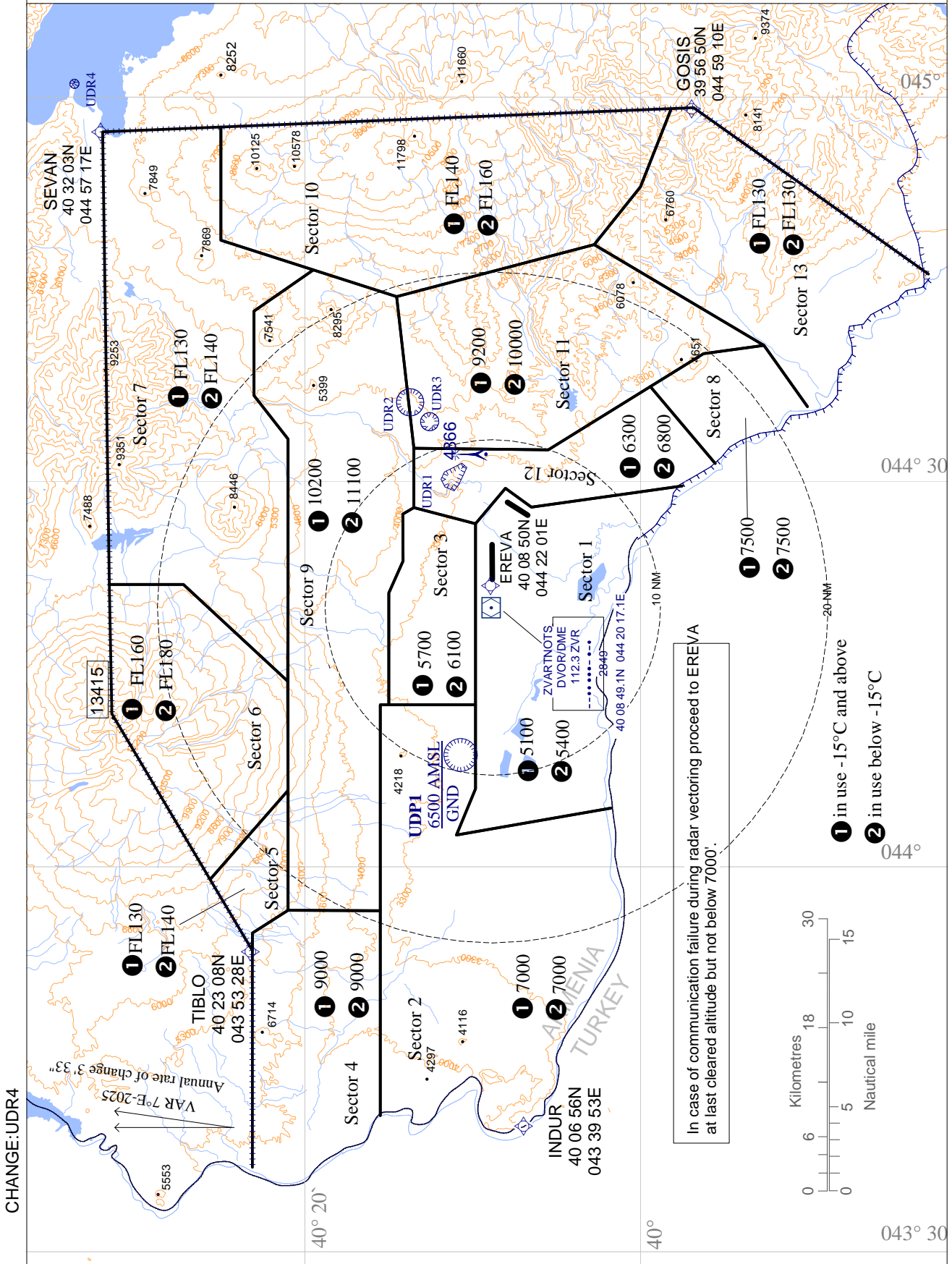
**ATC Surveillance Minimum
Altitude Chart - ICAO**

ATIS	119.5
YEREVAN / APP	126.0
YEREVAN / TOWER	128.0
YEREVAN / GROUND	119.0
EREBUNI / BOLOTNY	119.4

AD ELEV 2838

Transition Altitude
11500

**YEREVAN
TMA**



PAGE INTENTIONALLY LEFT BLANK

Standard Departure Route — Instrument SID RNAV1 (GNSS) RWY08

Designator	Route	After take-Off		Remarks
		Climb initially	Expect FREQ	
INDUR 3H	Climb on track 084° (T090.6°) to <u>YZ450</u> ; RT direct to INDUR.	A4100	Yerevan Approach 126.0 MHZ	PDG 4.6% up to FL140

Example: YZ450 denotes fly-over

RNAV SID CODING TABLE OF INDUR 3H

Path Terminator	Waypoint			Course/ Track Mag(True)	DIST NM	Turn Direction	Constraints		Navigation Specification	Remarks
	Identifier	Fly Over	Coordinates				Level	IAS		
CF	YZ450	Y	N 40 08 51.0 E 044 26 18.6	084° (T090.6°)	0.9			K210-	RNAV1	
DF	INDUR	N	N 40 06 56.0 E 043 39 53.0			R	FL140+		RNAV1	

Designator	Route	After take-Off		Remarks
		Climb initially	Expect FREQ	
SEVAN 3H	Climb on track 084°(T090.6°) to <u>YZ450</u> ; RT direct to YZ453 then on track 039° (T046.1) to SEVAN	A4100	Yerevan Approach 126.0 MHZ	PDG 6.6% up to FL130

Example: YZ450 denotes fly-over

RNAV SID CODING TABLE OF SEVAN 3H

Path Terminator	Waypoint			Course/ Track Mag(True)	DIST NM	Turn Direction	Constraints		Navigation Specification	Remarks
	Identifier	Fly Over	Coordinates				Level	IAS		
CF	YZ450	Y	N 40 08 51.0 E 044 26 18.6	084° (T090.6°)	0.9			K210-	RNAV1	
DF	YZ453	N	N 40 20 30.0 E 044 41 31.0			R	FL130+			
TF	SEVAN	N	N 40 32 03.0 E 044 57 17.0	039° (T046.1)	16.7		FL130+		RNAV1	

PAGE INTENTIONALLY LEFT BLANK

Standard Departure Route — Instrument SID RNAV1 (GNSS) RWY08

Designator	Route	After take-Off		Remarks
		Climb initially	Expect FREQ	
TIBLO 3H	Climb on track 084°(T090.6°) to <u>YZ450</u> ; RT direct to TIBLO	A4100	Yerevan Approach 126.0 MHZ	PDG 5.2% up to FL140

Example: YZ450 denotes fly-over

RNAV SID CODING TABLE OF TIBLO 3H

Path Terminator	Waypoint			Course/ Track Mag(True)	DIST NM	Turn Direction	Constraints		Navigation Specification	Remarks
	Identifier	Fly Over	Coordinates				Level	IAS		
CF	YZ450	Y	N 40 08 51.0 E 044 26 18.6	084° (T090.6°)	0.9			K210-	RNAV1	
DF	TIBLO	N	N 40 23 08.0 E 043 53 28.0			R	FL140+		RNAV1	

Designator	Route	After take-Off		Remarks
		Climb initially	Expect FREQ	
GOSIS 4H	Climb on track 084°(T090.6°) to <u>YZ450</u> ; RT direct to GOSIS	A4100	Yerevan Approach 126.0 MHZ	PDG 6.8% up to FL130

Example: YZ450 denotes fly-over

RNAV SID CODING TABLE OF GOSIS 4H

Path Terminator	Waypoint			Course/ Track Mag(True)	DIST NM	Turn Direction	Constraints		Navigation Specification	Remarks
	Identifier	Fly Over	Coordinates				Level	IAS		
CF	YZ450	Y	N 40 08 51.0 E 044 26 18.6	084° (T090.6°)	0.9			K210-	RNAV1	
DF	GOSIS	N	N 39 56 50.0 E 044 59 10.0			R	FL130+		RNAV1	

PAGE INTENTIONALLY LEFT BLANK

Standard Departure Route — Instrument SID RNAV1 (GNSS) RWY08

Waypoint Data/ List

WPT Name	CODING		DISPLAY	
YZ450	N 40 08 51.0	E 044 26 18.6	N 40 08.9	E 044 26.3
YZ453	N 40 20 30.0	E 044 41 31.0	N 40 20.5	E 044 41.5
SEVAN	N 40 32 03.0	E 044 57 17.0	N 40 32.0	E 044 57.3
INDUR	N 40 06 56.0	E 043 39 53.0	N 40 06.9	E 043 39.9
GOSIS	N 39 56 50.0	E 044 59 10.0	N 39 56.8	E 044 59.2
TIBLO	N 40 23 08.0	E 043 53 28.0	N 40 23.0	E 043 53.5

PAGE INTENTIONALLY LEFT BLANK

CHANGE: UDR4 modified

STANDARD DEPARTURE CHART - INSTRUMENT (SID) - ICAO

AD ELEV 2838
THR RWY 08 ELEV 2800

ATIS 119.5
YEREVAN / GROUND 119.0
YEREVAN / TOWER 128.0
YEREVAN / APP 126.0

TRANSITION ALTITUDE 11500

YEREVAN / Zvartnots RNAV1 (GNSS) RWY 08

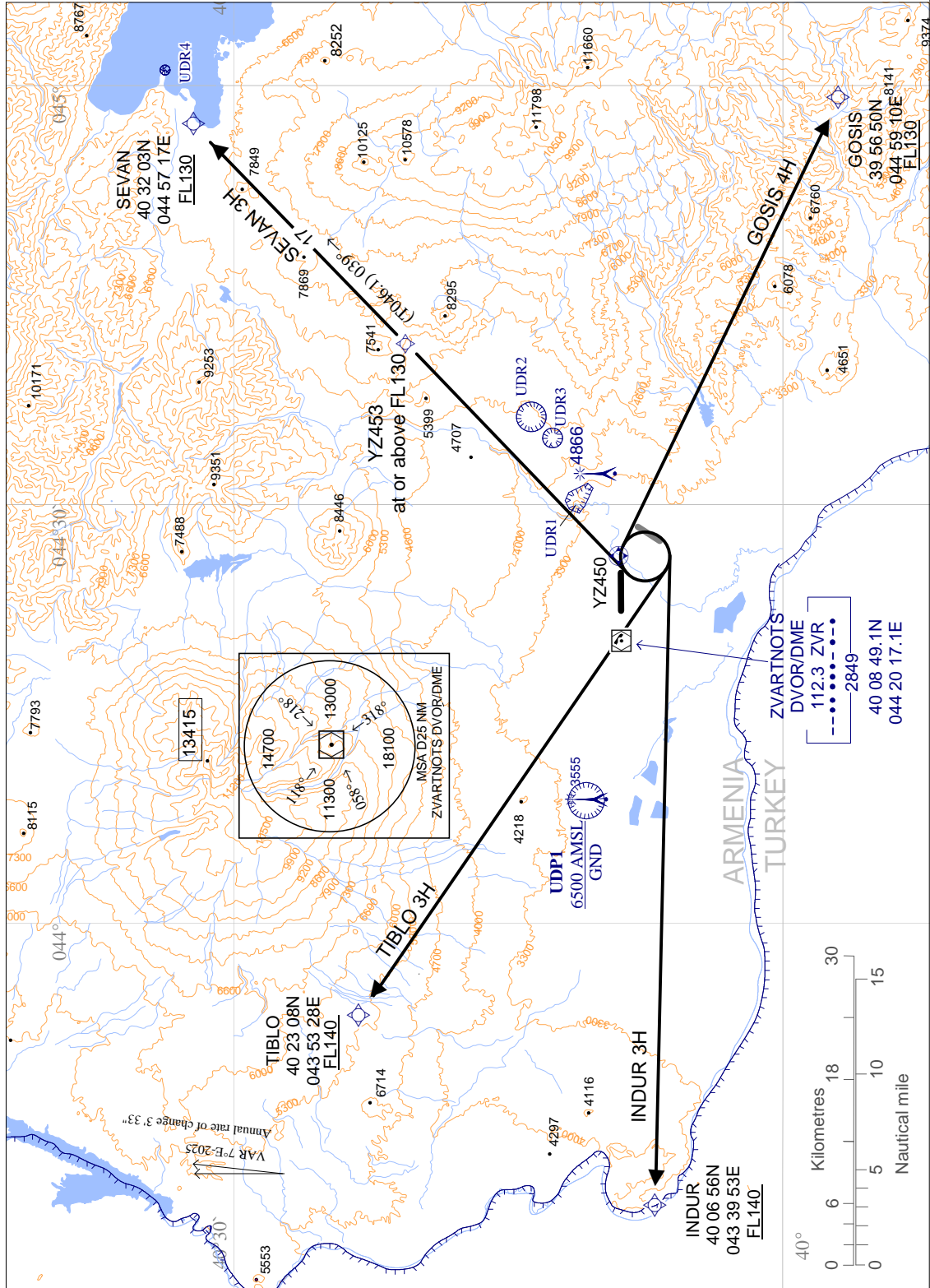
TIBLO 3H, SEVAN 3H
GOSIS 4H, INDUR 3H

WARNING:

- ALTITUDES & ELEVATIONS ARE IN FEET
- TRACKS ARE MAGNETIC
- TRACKS IN BRACKETS ARE TRUE
- DISTANCES ARE IN NM
- UDP 1 - 401044N 0440848E
RADIUS 1 NM
- UDR 1 - 401153N 0443012E-401141N 0443047E
-401039N 0443127E-401022N 0443107E
-401049N 0442949E-401107N 0442919E
-401139N 0442936E-401153N 0443012E
6000 FT AMSL / GND
- UDR 2 - 401344N 0443612E
RADIUS 0.8 NM 5500FT AMSL/GND
- UDR 3 - 401234N 0443442E
RADIUS 0.5 NM 6000FT AMSL/GND
- UDR 4 - 403344N 0450102E
RADIUS 0.3 NM 8100FT AMSL/GND

NOTES:

- Contact Yerevan Approach immediately after take-off.
- Standard Instrument Departure Routes are also minimum noise routings.
- Strict adherence within the limits of performance criteria is mandatory.
- If unable to comply with SID, climb gradients or non-standard clearance issued, advise ATC prior to take-off and request alternative clearance.
- During initial turns Max IAS 210 bank angle 20°



PAGE INTENTIONALLY LEFT BLANK

Standard Departure Route — Instrument SID RNAV1 (GNSS) RWY26

Designator	Route	After take-Off		Remarks
		Climb initially	Expect FREQ	
SEVAN 3E	Climb on track 263°(T270.4°) to <u>YZ455</u> ; RT direct to YZ457 then on track 047° (T053.8°) to SEVAN	A4100	Yerevan Approach 126.0 MHZ	PDG 7% up to FL130

Example: YZ455 denotes fly-over**RNAV SID CODING TABLE OF SEVAN 3E**

Path Terminator	Waypoint			Course/ Track Mag(True)	DIST NM	Turn Direction	Constraints		Navigation Specification	Remarks
	Identifier	Fly Over	Coordinates				Level	IAS		
CF	YZ455	Y	N 40 08 50.0 E 044 21 07.0	263° (T270.4°)	1.0			K210-	RNAV1	
DF	YZ457	N	N 40 22 05.0 E 044 39 24.0			R	FL130+		RNAV1	
TF	SEVAN	N	N 40 32 03.0 E 044 57 17.0	047° (T053.8°)	16.9		FL130+		RNAV1	

Designator	Route	After take-Off		Remarks
		Climb initially	Expect FREQ	
TIBLO 3E	Climb on track 263°(T270.4°) to <u>YZ455</u> ; RT direct to YZ456 then on track 298° (T305.0°) to TIBLO	A4100	Yerevan Approach 126.0 MHZ	PDG 6.9% up to A6300 PDG 6.6% from A6300 up to FL140

Example: YZ455 denotes fly-over**RNAV SID CODING TABLE OF TIBLO 3E**

Path Terminator	Waypoint			Course/ Track Mag(True)	DIST NM	Turn Direction	Constraints		Navigation Specification	Remarks
	Identifier	Fly Over	Coordinates				Level	IAS		
CF	YZ455	Y	N 40 08 50.0 E 044 21 07.0	263° (T270.4°)	1.0			K210-	RNAV1	
DF	YZ456	N	N 40 12 37.0 E 044 13 08.0			R	A6300+	K210-	RNAV1	
TF	TIBLO	N	N 40 23 08.0 E 043 53 28.0	298° (T305.0°)	18.4		FL140+		RNAV1	

PAGE INTENTIONALLY LEFT BLANK

Standard Departure Route — Instrument SID RNAV1 (GNSS) RWY26

Designator	Route			After take-Off				Remarks		
				Climb initially		Expect FREQ				
INDUR 3E	Climb on track 263°(T270.4°) to <u>YZ455</u> ; direct to INDUR			A4100		Yerevan Approach 126.0 MHZ		PDG 5.6% up to FL140		
Example: <u>YZ455</u> denotes fly-over										
RNAV SID CODING TABLE OF INDUR 3E										
Path Terminator	Waypoint			Course/ Track Mag(True)	DIST NM	Turn Direction	Constraints		Navigation Specification	Remarks
	Identifier	Fly Over	Coordinates				Level	IAS		
CF	YZ455	Y	N 40 08 50.0 E 044 21 07.0	263° (T270.4°)	1.0			K210-	RNAV1	
DF	INDUR	N	N 40 06 56.0 E 043 39 53.0				FL140+		RNAV1	

Designator	Route			After take-Off				Remarks		
				Climb initially		Expect FREQ				
GOSIS 3E	Climb on track 263°(T270.4°) to <u>YZ455</u> ; LT direct to GOSIS			A4100		Yerevan Approach 126.0 MHZ		PDG 6.2% up to FL130		
Example: <u>YZ455</u> denotes fly-over										
RNAV SID CODING TABLE OF GOSIS 3E										
Path Terminator	Waypoint			Course/ Track Mag(True)	DIST NM	Turn Direction	Constraints		Navigation Specification	Remarks
	Identifier	Fly Over	Coordinates				Level	IAS		
CF	YZ455	Y	N 40 08 50.0 E 044 21 07.0	263° (T270.4°)	1.0	L		K210-	RNAV1	
DF	GOSIS	N	N 39 56 50.0 E 044 59 10.0				FL130+		RNAV1	

PAGE INTENTIONALLY LEFT BLANK

Standard Departure Route — Instrument SID RNAV1 (GNSS) RWY26

Waypoint Data/ List

WPT Name	CODING		DISPLAY	
YZ455	N 40 08 50.0	E 044 21 07.0	N 40 08.8	E 044 21.1
YZ456	N 40 12 37.0	E 044 13 08.0	N 40 12.6	E 044 13.1
YZ457	N 40 22 05.0	E 044 39 24.0	N 40 22.0	E 044 39.4
SEVAN	N 40 32 03.0	E 044 57 17.0	N 40 32.0	E 044 57.3
INDUR	N 40 06 56.0	E 043 39 53.0	N 40 06.9	E 043 39.9
GOSIS	N 39 56 50.0	E 044 59 10.0	N 39 56.8	E 044 59.2
TIBLO	N 40 23 08.0	E 043 53 28.0	N 40 23.0	E 043 53.5

PAGE INTENTIONALLY LEFT BLANK

CHANGE: UDR4 modified

**STANDARD DEPARTURE CHART -
INSTRUMENT (SID) - ICAO**

AD ELEV 2838
THR RWY 26 ELEV 2838

TRANSITION ALTITUDE 11500

ATIS
YEREVAN / GROUND 119.5
YEREVAN / TOWER 119.0
YEREVAN / APP 128.0
YEREVAN / APP 126.0

**YEREVAN / Zvartnots
RNAV1 (GNSS) RWY 26**

TIBLO 3E, SEVAN 3E
GOSIS 3E, INDUR 3E

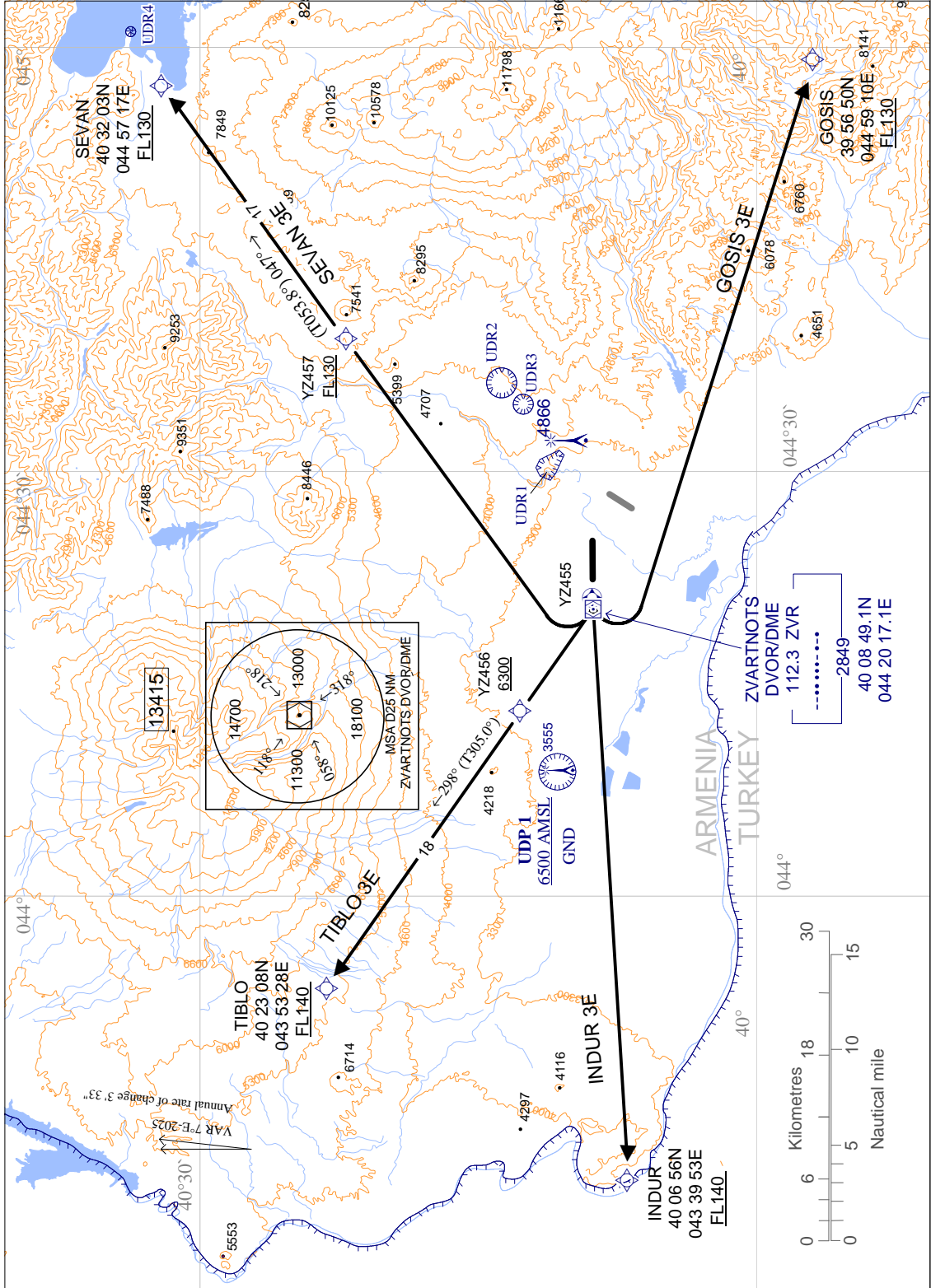
WARNING:

- ALTITUDES & ELEVATIONS ARE IN FEET
- TRACKS ARE MAGNETIC
- TRACKS IN BRACKETS ARE TRUE
- DISTANCES ARE IN NM
- UDP 1 - 401044N 0440848E
RADIUS 1 NM

- UDR 1 - 401153N 0443012E-401141N 0443047E
-401039N 0443127E-401022N 0443107E
-401049N 0442949E-401107N 0442919E
-401139N 0442936E-401153N 0443012E
6000 FT AMSL / GND
- UDR 2 - 401344N 0443612E
RADIUS 0.8 NM 5500FT AMSL/GND
- UDR 3 - 401234N 0443442E
RADIUS 0.5 NM 6000FT AMSL/GND
- UDR 4 - 403344N 0450102E
RADIUS 0.3 NM 8100FT AMSL/GND

NOTES:

- Contact Yerevan Approach immediately after take-off.
- Standard Instrument Departure Routes are also minimum noise routings.
- Strict adherence within the limits of performance criteria is mandatory.
- If unable to comply with SID, climb gradients or non-standard clearance issued, advise ATC prior to take-off and request alternative clearance.
- During initial turns Max IAS 210 bank angle 20°



PAGE INTENTIONALLY LEFT BLANK

Standard Arrival Route — Instrument STAR RNAV1 (GNSS) RWY08

Designator	Route								Remarks	
TIBLO 3A	Track 148° (T154.9°) TIBLO - IAF OKUDA; TIBLO (K250-; FL130+)-IAF OKUDA (A7000+)								STAR for ILS/DME, DVOR/DME, RNP APCH	
RNAV STAR CODING TABLE OF TIBLO 3A										
Path Terminator	Waypoint			Course/ Track Mag(True)	DIST NM	Turn Direction	Constraints		Navigation Specification	Remarks
	Identifier	Fly Over	Coordinates				Level	IAS		
IF	TIBLO	N	N 40 23 08.0 E 043 53 28.0				FL130+	K250-	RNAV1	
TF	OKUDA	N	N 40 08 49.0 E 044 02 11.0	148° (T154.9°)	15.8		A7000+	K230-	RNAV1	

Designator	Route								Remarks	
SEVAN 4A	Track 223° (T229.5°) SEVAN – MAXAK; 225° (T231.8°) MAXAK - IAF ZVR; SEVAN (K250-; FL130+) – MAXAK (K250-; FL130+) - IAF ZVR (A7000+)								STAR for ILS/DME, DVOR/DME, RNP APCH	
RNAV STAR CODING TABLE OF SEVAN 4A										
Path Terminator	Waypoint			Course/ Track Mag(True)	DIST NM	Turn Direction	Constraints		Navigation Specification	Remarks
	Identifier	Fly Over	Coordinates				Level	IAS		
IF	SEVAN	N	N 40 32 03.0 E 044 57 17.0				FL130+	K250-	RNAV1	
TF	MAXAK	N	N 40 21 04.4 E 044 40 31.4	223° (T229.5°)	16.9		FL130+	K250-	RNAV1	
TF	ZVR	N	N 40 08 49.1 E 044 20 17.1	225° (T231.8°)	19.8		A7000+	K220-	RNAV1	

PAGE INTENTIONALLY LEFT BLANK

Standard Arrival Route — Instrument STAR RNAV1 (GNSS) RWY08

Designator	Route								Remarks	
INDUR 3A	Track 077° (T083.6°) INDUR - IAF OKUDA INDUR (K250-;FL140+) - IAF OKUDA (A7000+)								STAR for ILS/DME, DVOR/DME, RNP APCH	
RNAV STAR CODING TABLE OF INDUR 3A										
Path Terminator	Waypoint			Course/ Track Mag(True)	DIST NM	Turn Direction	Constraints		Navigation Specification	Remarks
	Identifier	Fly Over	Coordinates				Level	IAS		
IF	INDUR	N	N 40 06 56.0 E 043 39 53.0				FL140+	K250-	RNAV1	
TF	OKUDA	N	N 40 08 49.0 E 044 02 11.0	077° (T083.6°)	17.2		A7000+	K230-	RNAV1	

Designator	Route								Remarks	
GOSIS 4A	Track 286° (T293.0°) GOSIS – BANAG; 284° (T290.6°) BANAG- IAF ZVR; GOSIS (K250-;FL130+) – BANAG (K250-;A10000+) - IAF ZVR (A7000+)								STAR for ILS/DME, DVOR/DME, RNP APCH	
RNAV STAR CODING TABLE OF GOSIS 4A										
Path Terminator	Waypoint			Course/ Track Mag(True)	DIST NM	Turn Direction	Constraints		Navigation Specification	Remarks
	Identifier	Fly Over	Coordinates				Level	IAS		
IF	GOSIS	N	N 39 56 50.0 E 044 59 10.0				FL130+	K250-	RNAV1	
TF	BANAG	N	N 40 03 53.4 E 044 37 25.0	286° (T293.0°)	18.4		A10000+	K250-	RNAV1	
TF	ZVR	N	N 40 08 49.1 E 044 20 17.1	284° (T290.6°)	14.0		A7000+	K220-	RNAV1	

PAGE INTENTIONALLY LEFT BLANK

Standard Arrival Route — Instrument STAR RNAV1 (GNSS) RWY08**Waypoint Data/ List**

WPT Name	CODING		DISPLAY	
SEVAN	N 40 32 03.0	E 044 57 17.0	N 40 32.1	E 044 57.3
INDUR	N 40 06 56.0	E 043 39 53.0	N 40 06.9	E 043 39.9
GOSIS	N 39 56 50.0	E 044 59 10.0	N 39 56.8	E 044 59.2
TIBLO	N 40 23 08.0	E 043 53 28.0	N 40 23.1	E 043 53.5
MAXAK	N 40 21 04.4	E 044 40 31.4	N 40 21.1	E 044 40.5
BANAG	N 40 03 53.4	E 044 37 25.0	N 40 03.9	E 044 37.4
OKUDA (IAF)	N 40 08 49.0	E 044 02 11.0	N 40 08.8	E 044 02.2
ZVR (IAF)	N 40 08 49.1	E 044 20 17.1	N 40 08.8	E 044 20.3

PAGE INTENTIONALLY LEFT BLANK

PAGE INTENTIONALLY LEFT BLANK

Standard Arrival Route — Instrument STAR RNAV1 (GNSS) RWY26

Designator	Route								Remarks	
GOSIS 3B	Track 283° (T290.0°) GOSIS – DITAK; Track 283° (T290°) DITAK -IAF LUMIK GOSIS (K250-;FL130+) – DITAK (K210-;A10000+) IAF LUMIK (A9200+)								STAR for RNP APCH (Z/Y)	
RNAV STAR CODING TABLE OF GOSIS 3B										
Path Terminator	Waypoint			Course/ Track Mag(True)	DIST NM	Turn Direction	Constraints		Navigation Specification	Remarks
	Identifier	Fly Over	Coordinates				Level	IAS		
IF	GOSIS	N	N 39 56 50.0 E 044 59 10.0				FL130+	K250-	RNAV1	
TF	DITAK	N	N 40 00 11.2 E 044 47 08.3	283° (T290.0°)	9.8		A10000+	K210-	RNAV1	
TF	LUMIK	N	N 40 01 59.6 E 044 40 36.8	283° (T290.0°)	5.3		A9200+	K210-	RNAV1	

Designator	Route								Remarks	
INDUR 3B	Track 089 (T095.7°) - IAF LUMIK INDUR (K250-;FL140+) – IAF LUMIK (A9200+)								STAR for RNP APCH (Z/Y)	
RNAV STAR CODING TABLE OF INDUR 3B										
Path Terminator	Waypoint			Course/ Track Mag(True)	DIST NM	Turn Direction	Constraints		Navigation Specification	Remarks
	Identifier	Fly Over	Coordinates				Level	IAS		
IF	INDUR	N	N 40 06 56.0 E 043 39 53.0				FL140+	K250-	RNAV1	
TF	LUMIK	N	N 40 01 59.6 E 044 40 36.8	089 (T095.7°)	46.9		A9200+	K210-	RNAV1	

PAGE INTENTIONALLY LEFT BLANK

Standard Arrival Route — Instrument STAR RNAV1 (GNSS) RWY26

Designator	Route								Remarks	
SEVAN 3B	Track 223° (T229.5°) SEVAN – MAXAK Track 173° (T179.8°) MAXAK- IAF LUMIK SEVAN (K250-;FL130+) – MAXAK (K250-;FL130+) - IAF LUMIK (A9200+)								STAR for RNP APCH (Z/Y)	
RNAV STAR CODING TABLE OF SEVAN 3B										
Path Terminator	Waypoint			Course/ Track Mag(True)	DIST NM	Turn Direction	Constraints		Navigation Specification	Remarks
	Identifier	Fly Over	Coordinates				Level	IAS		
IF	SEVAN	N	N 40 32 03.0 E 044 57 17.0				FL130+	K250-	RNAV1	
TF	MAXAK	N	N 40 21 04.4 E 044 40 31.4	223° (T229.5°)	16.7		FL130+	K250-	RNAV1	
TF	LUMIK	N	N 40 01 59.6 E 044 40 36.8	173° (T179.8°)	19.1	L	A9200+	K210-	RNAV1	

Designator	Route								Remarks	
TIBLO 3B	Track 113 (T120.1°) - IAF LUMIK TIBLO (K250-;FL130+) – IAF LUMIK (A9200+)								STAR for RNP APCH (Z/Y)	
RNAV STAR CODING TABLE OF TIBLO 3B										
Path Terminator	Waypoint			Course/ Track Mag(True)	DIST NM	Turn Direction	Constraints		Navigation Specification	Remarks
	Identifier	Fly Over	Coordinates				Level	IAS		
IF	TIBLO	N	N 40 23 08.0 E 043 53 28.0				FL130+	K250-	RNAV1	
TF	LUMIK	N	N 40 01 59.6 E 044 40 36.8	113° (T120.1°)	42.0		A9200+	K210-	RNAV1	

PAGE INTENTIONALLY LEFT BLANK

Standard Arrival Route — Instrument STAR RNAV1 (GNSS) RWY26**Waypoint Data/ List**

WPT Name	CODING		DISPLAY	
SEVAN	N 40 32 03.0	E 044 57 17.0	N 40 32.1	E 044 57.3
INDUR	N 40 06 56.0	E 043 39 53.0	N 40 06.9	E 043 39.9
GOSIS	N 39 56 50.0	E 044 59 10.0	N 39 56.8	E 044 59.2
TIBLO	N 40 23 08.0	E 043 53 28.0	N 40 23.1	E 043 53.5
MAXAK	N 40 21 04.4	E 044 40 31.4	N 40 21.1	E 044 40.5
DITAK	N 40 00 11.2	E 044 47 08.3	N 40 00.2	E 044 47.1
LUMIK (IAF)	N 40 01 59.6	E 044 40 36.8	N 40 02.0	E 044 40.6

PAGE INTENTIONALLY LEFT BLANK

CHANGE:UDR4 modified

**STANDARD ARRIVAL CHART -
INSTRUMENT (STAR) - ICAO**

TRANSITION LEVEL By ATC
TRANSITION ALTITUDE 11500

AD ELEV 2838
THR RWY 26 ELEV 2838

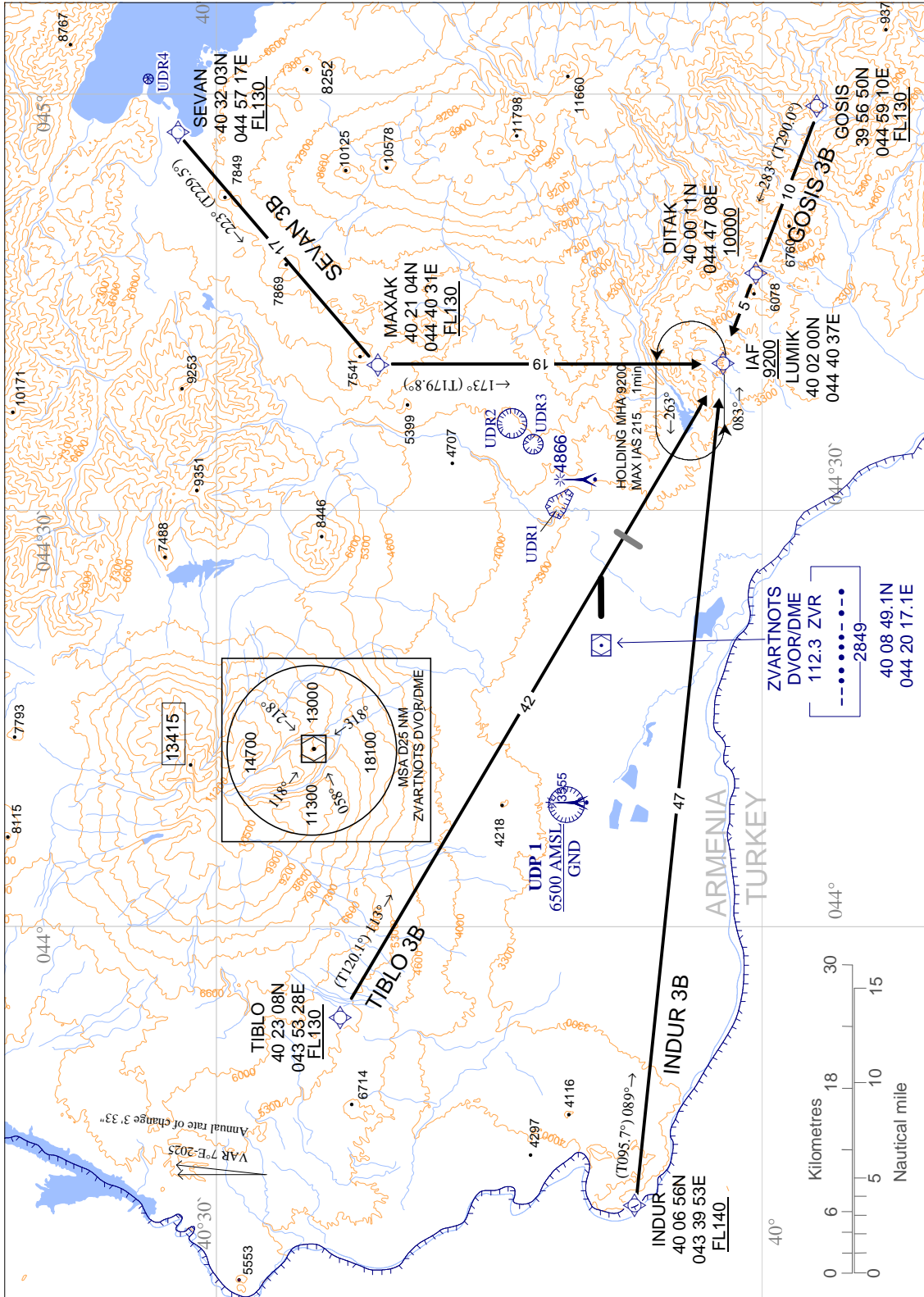
ATIS 119.5
YEREVAN / APP 126.0
YEREVAN / TOWER 128.0
YEREVAN / GROUND 119.0

**YEREVAN / Zvartnots
RNAV1 (GNSS) RWY 26**

TIBLO 3B, SEVAN 3B,
GOSIS 3B, INDUR 3B

WARNING:

- ALTITUDES & ELEVATIONS ARE IN FEET
- TRACKS ARE MAGNETIC
- TRACKS IN BRACKETS ARE TRUE
- DISTANCES ARE IN NM
- UDP 1 - 401044N 0440848E
RADIUS 1 NM
- UDR 1 - 401153N 0443012E-401141N 0443047E
-401039N 0443127E-401022N 0443107E
-401049N 0442949E-401107N 0442919E
-401139N 0442936E-401153N 0443012E
6000 FT AMSL / GND
- UDR 2 - 401344N 0443612E
RADIUS 0.8 NM 5500FT AMSL/GND
- UDR 3 - 401234N 0443442E
RADIUS 0.5 NM 6000FT AMSL/GND
- UDR 4 - 403344N 0450102E
RADIUS 0.3 NM 8100FT AMSL/GND



PAGE INTENTIONALLY LEFT BLANK

INSTRUMENT APPROACH CHART - ICAO

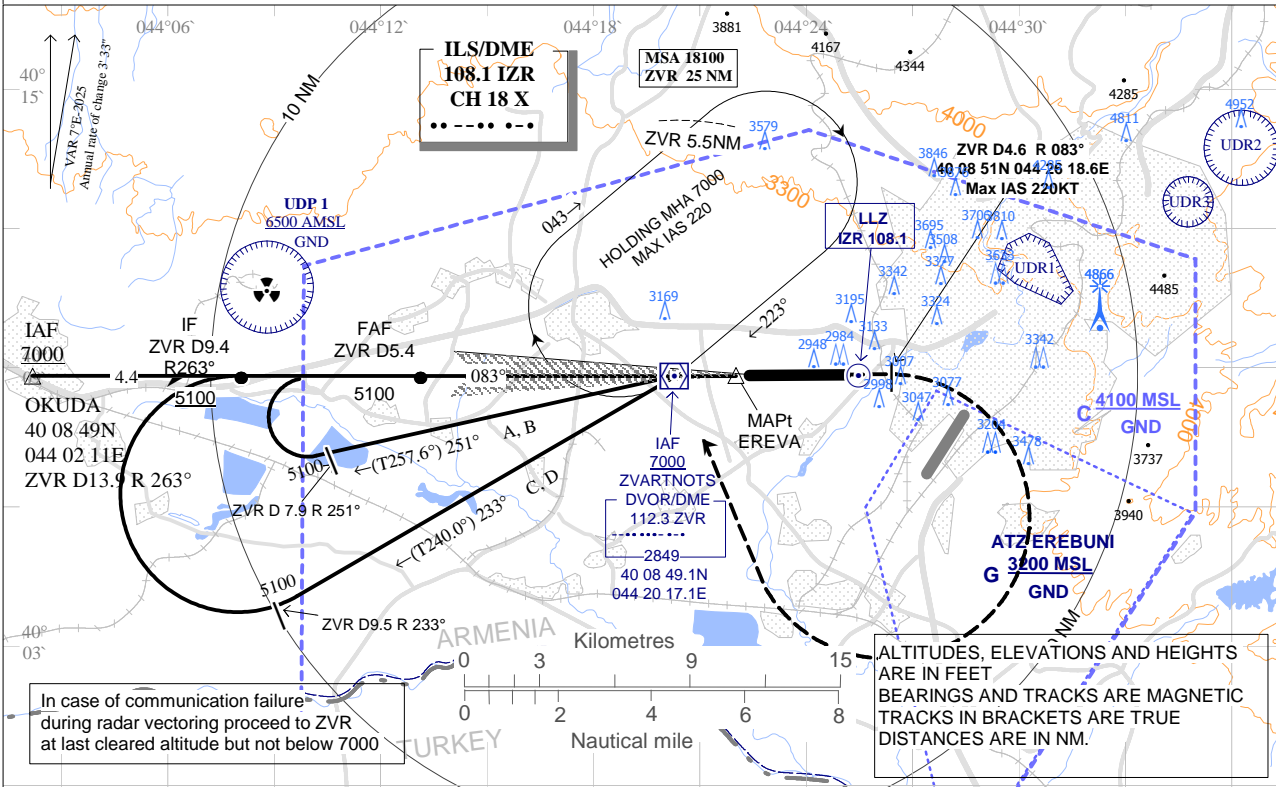
YEREVAN / Zvartnots

TRANSITION LEVEL By ATC
TRANSITION ALTITUDE 11500

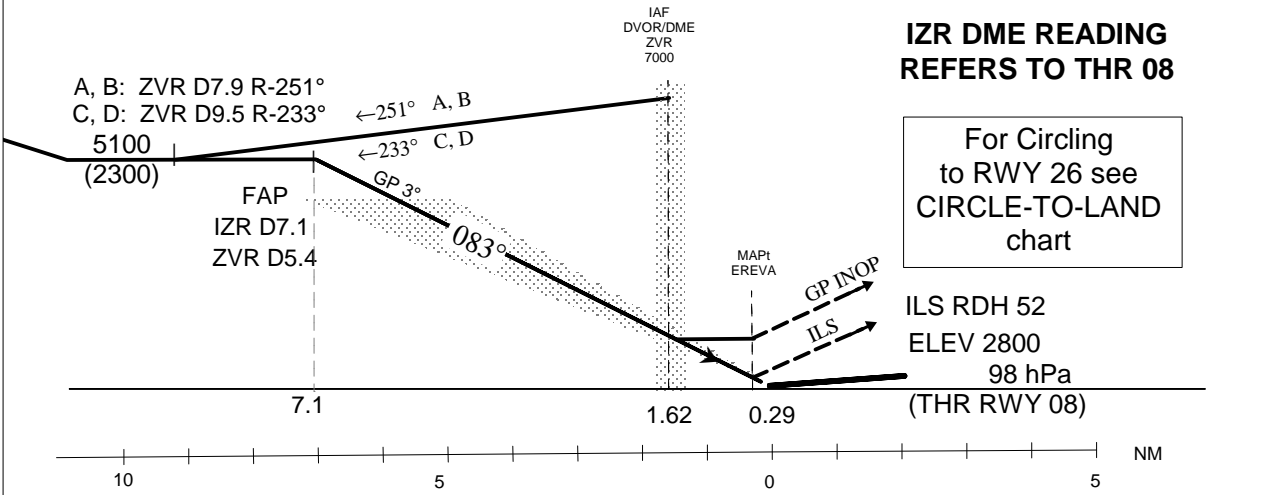
AD ELEV 2838
HEIGHTS RELATED TO
THR RWY 08 ELEV 2800

ATIS 119.5
YEREVAN / APP 126.0
YEREVAN / TWR 128.0
YEREVAN / GND 119.0

ILS/DME
RWY 08



MISSED APCH - Climb straight ahead to ZVR D4.6 then turn right to ZVR climbing to 7000 and hold.



Cat of ACFT	OCA/H				GP INOP	Final Approach Distance	ILS DME 7	ILS DME 5	ILS DME 3	ILS DME 1
	A	B	C	D						
Straight-in Approach	ILS CAT II	2853 (53)	2863 (63)	2879 (79)	2889 (89)	GP INOP	5087 (2287)	4448 (1648)	3810 (1010)	3171 (371)
	ILS CAT I	2951 (151)	2961 (161)	2971 (171)	2981 (181)					
	GP INOP	3210 (410)								

Ground Speed	kt	120	140	160	180	200
Rate of Descent (grad. 5.24 %)	ft/min	640	740	850	960	1060

MAPt - EREVA or D0.3 NM IZR

CHANGE:UDP, UDRs

PAGE INTENTIONALLY LEFT BLANK

INSTRUMENT APPROACH CHART - ICAO

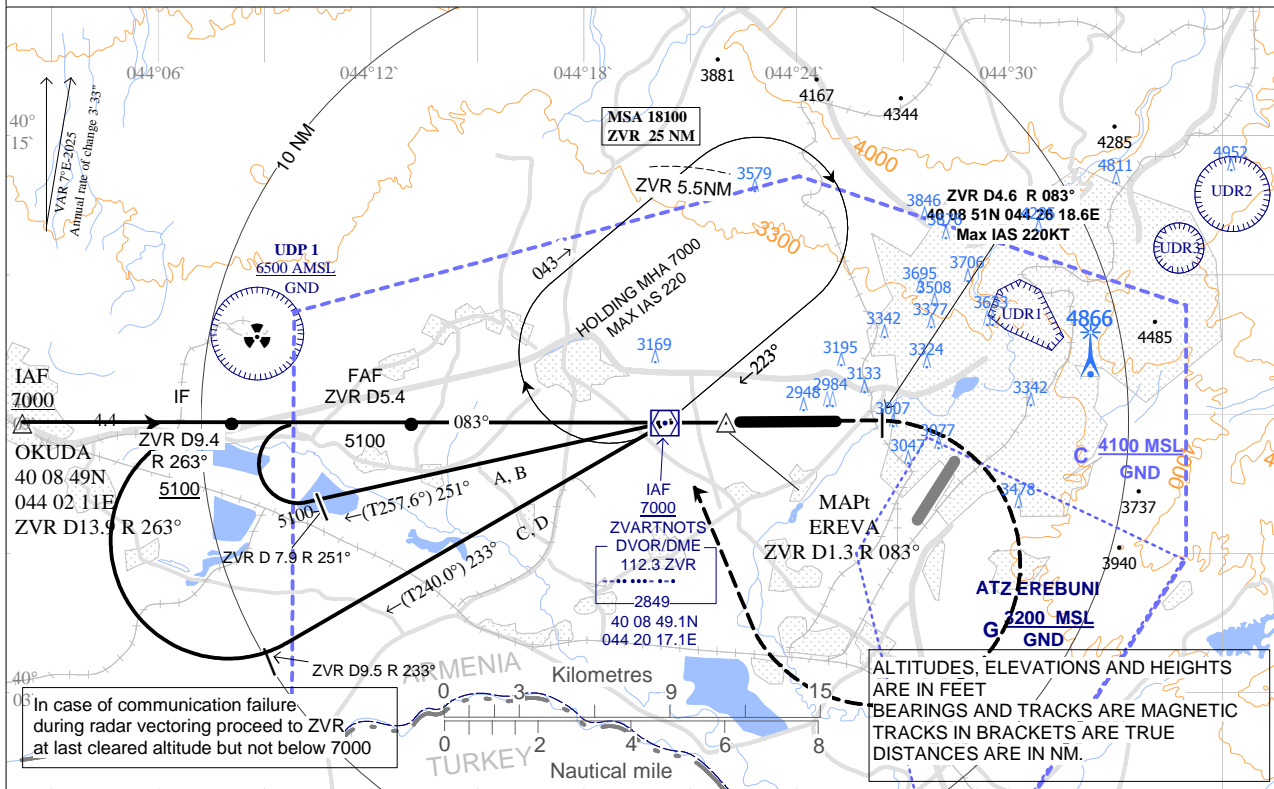
YEREVAN / Zvartnots

TRANSITION LEVEL By ATC
TRANSITION ALTITUDE 11500

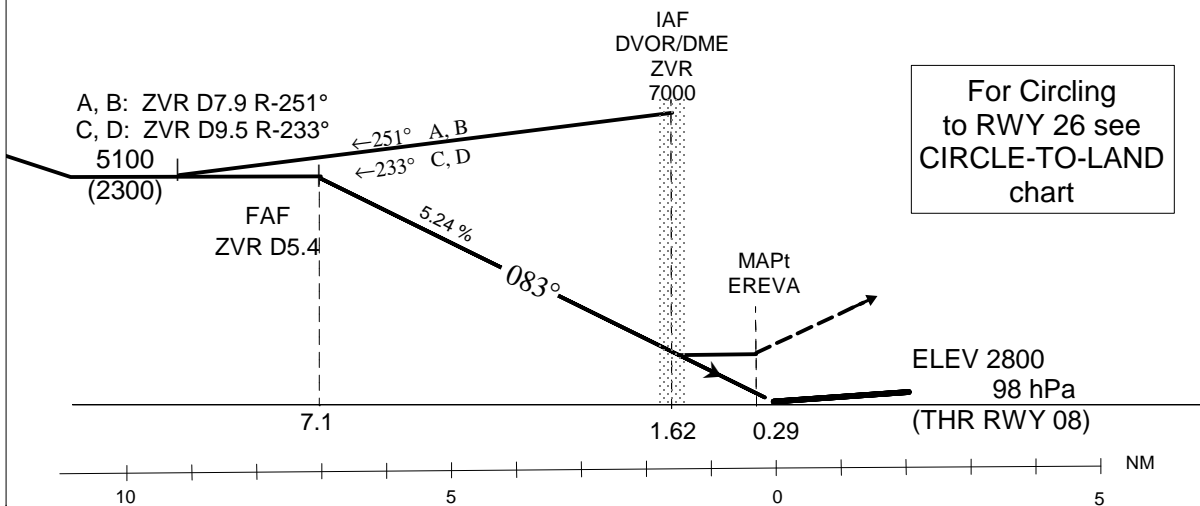
AD ELEV 2838
HEIGHTS RELATED TO
THR RWY 08 ELEV 2800

ATIS 119.5
YEREVAN / APP 126.0
YEREVAN / TWR 128.0
YEREVAN / GND 119.0

DVOR/DME
RWY 08



MISSED APCH - Climb straight ahead to ZVR D4.6 then turn right to ZVR climbing to 7000 and hold.



CHANGE: UDP, UDRs

Cat of ACFT	OCA/H				Final Approach Distance NM	ZVR DME 5	ZVR DME 3	ZVR DME 1
	A	B	C	D				
Straight-in Approach	3210 (410)				ALT (HGT)	4957 (2157)	4321 (1521)	3685 (885)

Ground Speed	kt	120	140	160	180	200
Rate of Descent (grad. 5.24 %)	ft/min	640	740	850	960	1060

MAPt - EREVA or ZVR D1.3NM R 083°

PAGE INTENTIONALLY LEFT BLANK

RNP RWY08 INSTRUMENT APPROACH (LNAV/VNAV)

Route Data

Coding Table From IAF OKUDA

Path Terminator	Waypoint				Course/ Track Mag (True)	DIST NM	Turn Direction	Constraints		Navigation Specification	Remarks
	Identifier	Type	Fly- Over	Coordinates				IAS	Level		
IF	OKUDA	IAF	N	N 40 08 49.0 E 044 02 11.0					A7000+	RNP APCH	
TF	YZ400	IF	N	N 40 08 44.2 E 044 07 58.3	083° (T089.6°)	4.4		K230-	A5100+	RNP APCH	
TF	ARMAV	FAF	N	N 40 08 46.4 E 044 13 11.2	082° (T089.4°)	4.0		K180-	A5100+	RNP APCH	

Coding Table From IAF ZVR

Path Terminator	Waypoint				Course/ Track Mag (True)	DIST NM	Turn Direction	Constraints		Navigation Specification	Remarks
	Identifier	Type	Fly- Over	Coordinates				IAS	Level		
IF	ZVR	IAF	N	N 40 08 49.1 E 044 20 17.1					A7000+	RNP APCH	
TF	YZ420	TF	N	N 40 03 46.2 E 044 13 14.7	220° (T227.0°)	7.4		K230-	A5100+	RNP APCH	
TF	YZ421	TF	N	N 40 03 43.9 E 044 08 02.1	263° (T269.5°)	4.0	R	K230-	A5100+	RNP APCH	
TF	YZ400	IF	N	N 40 08 44.2 E 044 07 58.3	352° (T359.4°)	5.0	R	K230-	A5100+	RNP APCH	
TF	ARMAV	FAF	N	N 40 08 46.4 E 044 13 11.2	082° (T089.4°)	4.0	R	K180-	A5100+	RNP APCH	

Coding Table For Final Approach / Missed Approach Segment

Path Terminator	Waypoint				Course/ Track Mag (True)	DIST NM/ Time	Turn Direction	Constraints		Navigation Specification	Remarks
	Identifier	Type	Fly- Over	Coordinates				IAS	Level		
IF	ARMAV	FAF	N	N 40 08 46.4 E 044 13 11.2				K180-	A5100+	RNP APCH	
TF	RWY08	MAPt	Y	N 40 08 49.7 E 044 22 23.9	083° (T089.5°)	7.1			A3150+	RNP APCH	
TF	YZ450	MATF	Y	N 40 08 51.0 E 044 26 18.6	083° (T089.6°)	3.0		K180-	A3400+	RNP APCH	
DF	ZVR	MAHF	N	N 40 08 49.1 E 044 20 17.1			R	K220-	A7000+	RNP APCH	
HM	ZVR	MAHF	N	N 40 08 49.1 E 044 20 17.1	223° (T230.0°)		R	K220-	A7000+	RNP APCH	HM

PAGE INTENTIONALLY LEFT BLANK

RNP RWY08 INSTRUMENT APPROACH (LNAV/VNAV)**Waypoint Data/ List**

WPT Name	CODING		DISPLAY	
ZVR (IAF,MAHF)	N 40 08 49.1	E 044 20 17.1	N 40 08.8	E 044 20.3
OKUDA(IAF)	N 40 08 49.0	E 044 02 11.0	N 40 08.8	E 044 02.2
YZ420(TF)	N 40 03 46.2	E 044 13 14.7	N 40 03.8	E 044 13.2
YZ421(TF)	N 40 03 43.9	E 044 08 02.1	N 40 03.7	E 044 08.0
YZ400(IF)	N 40 08 44.2	E 044 07 58.3	N 40 08.7	E 044 08.0
ARMAV(FAF)	N 40 08 46.4	E 044 13 11.2	N 40 08.8	E 044 13.2
RW08(MAPt)	N 40 08 49.7	E 044 22 23.9	N 40 08.8	E 044 22.4
YZ450(MATF)	N 40 08 51.0	E 044 26 18.6	N 40 08.8	E 044 26.3

PAGE INTENTIONALLY LEFT BLANK

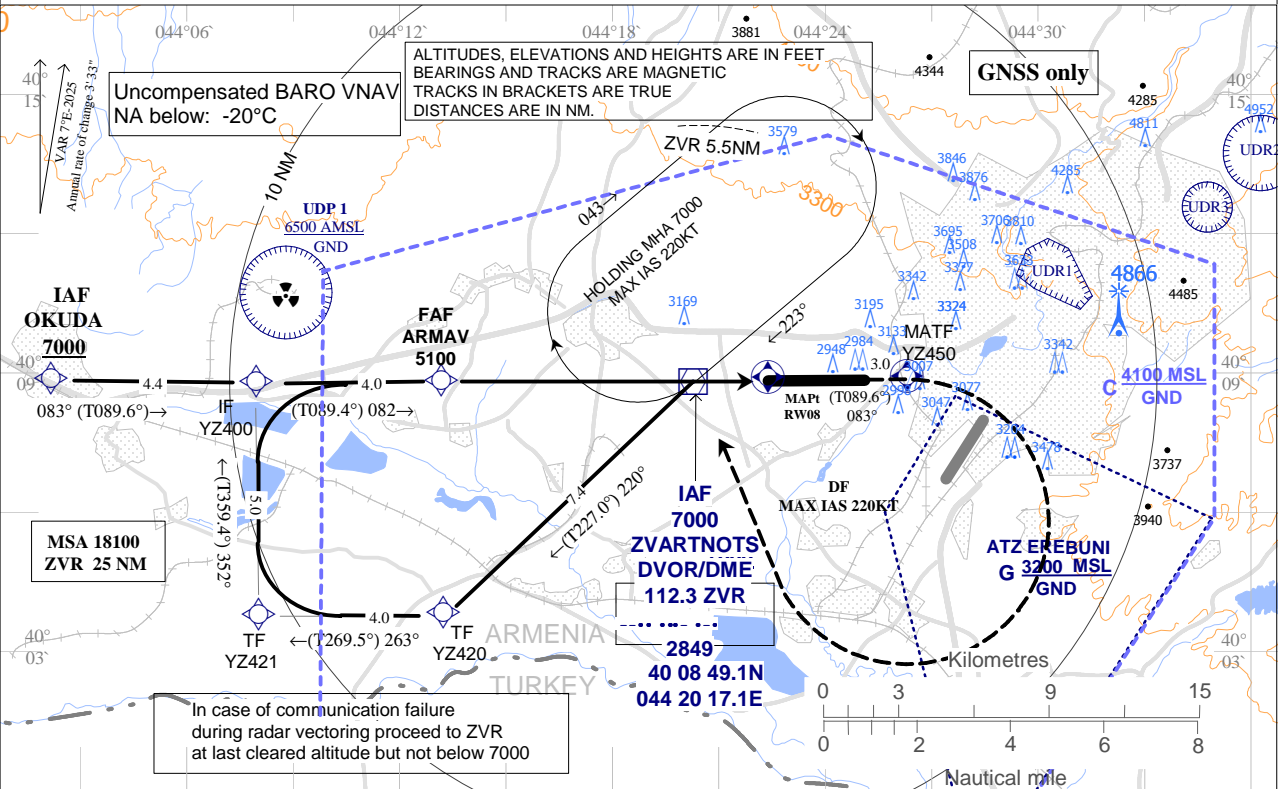
INSTRUMENT APPROACH CHART - ICAO

TRANSITION LEVEL By ATC
TRANSITION ALTITUDE 11500

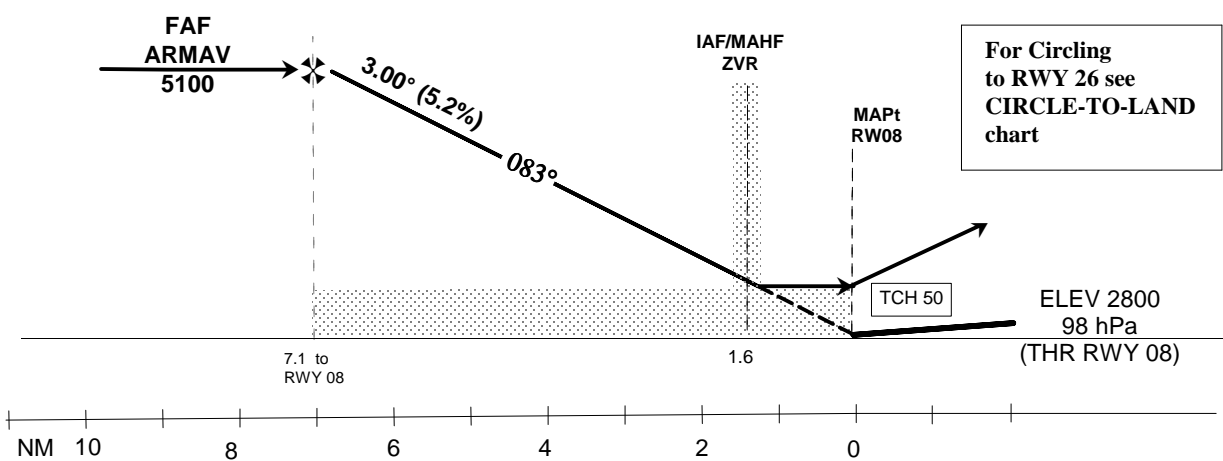
AD ELEV 2838
HEIGHTS RELATED TO
THR RWY 08 ELEV 2800

ATIS 119.5
YEREVAN / APP 126.0
YEREVAN / TWR 128.0
YEREVAN / GND 119.0

YEREVAN / Zvartnots
RNP RWY08
(LNAV / VNAV)



MISSED APCH - Climb straight ahead to YZ450 then turn right to IAF ZVR to 7000 and hold.



CHANGE:corr. MAPt WPT symbol

Cat of ACFT	OCA (OCH)				Timing not authorized for defining the MAPt.						
	A	B	C	D	Ground Speed	kt	120	140	160	180	200
LNAV	3230 (430)				ARMAV - RWY08 MAPt	ft / min	640	740	850	960	1060
LNAV / VNAV	3150 (350)					min : sec	3:33	3:02	2:40	2:22	2:08
DIST THR/ RWY08		NM	7.1	6	4	2					
ALTITUDE		ft	5100	4760	4130	3490					

PAGE INTENTIONALLY LEFT BLANK

CIRCLE-TO-LAND

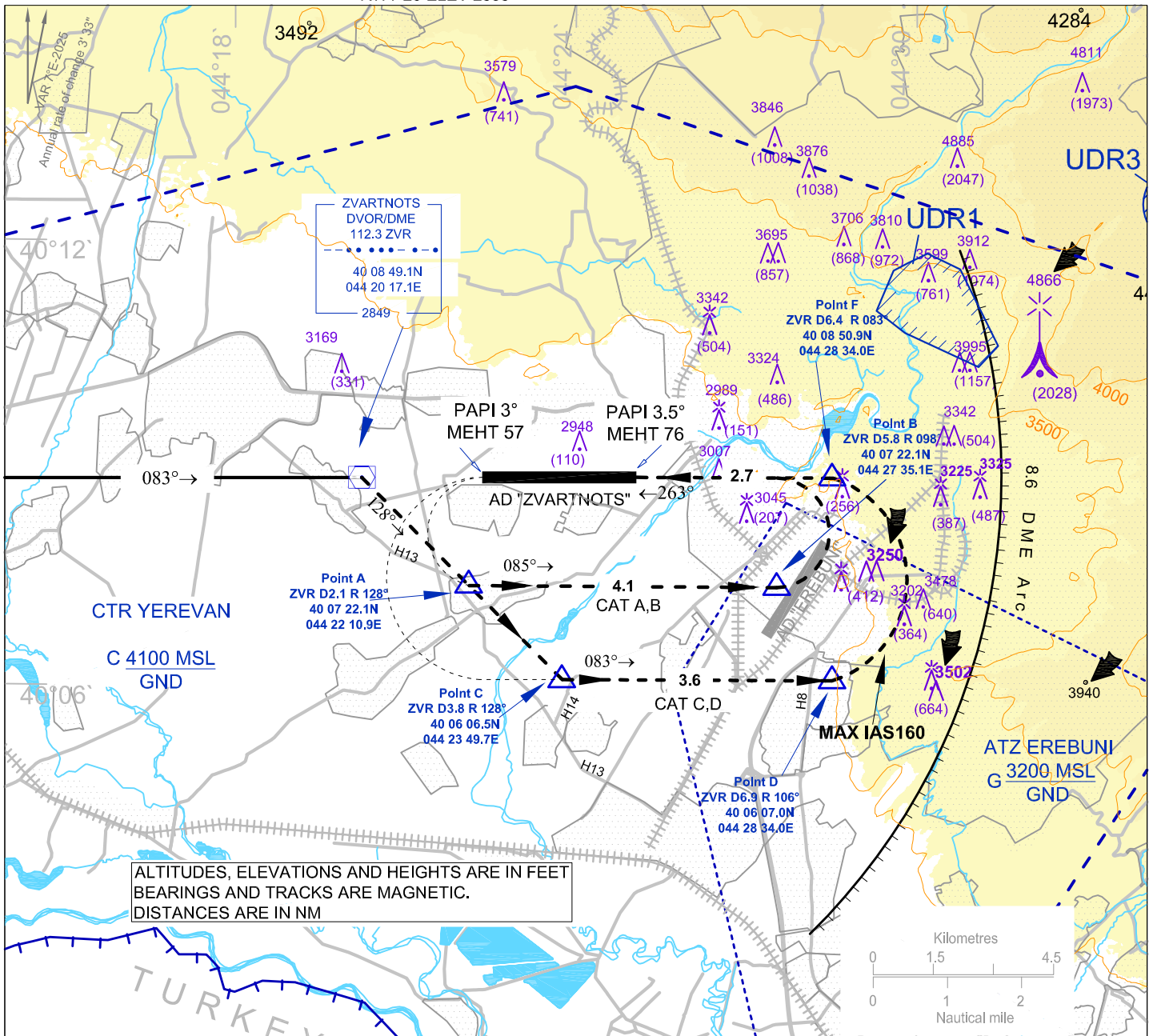
TRANSITION LEVEL By ATC
TRANSITION ALTITUDE 11500

ATIS 119.5
YEREVAN / APP 126.0
YEREVAN / TOWER 128.0
YEREVAN / GND 119.0

**YEREVAN/ ZVARTNOTS
RWY 26**

**BY PRESCRIBED
FLIGHT TRACKS**

AD ELEV 2838
HEIGHTS RELATED TO THR
RWY 26 ELEV 2838



CHANGE: UDRS

ALTITUDES, ELEVATIONS AND HEIGHTS ARE IN FEET
BEARINGS AND TRACKS ARE MAGNETIC.
DISTANCES ARE IN NM

MISSED APCH: Climb straight ahead to published OCA(H), turn left 083° track, then according to chart.

Cat of ACFT	OCA/H	VIS
A,B	3600 (762)	4000 m
C,D	3900 (1062)	5000 m

CAUTION:

1. Turn final without descent and do NOT cross arc DME 8.6 NM.
2. Circling NOT authorized NORTH of the aerodrome.
3. Do NOT mistake Erebuni aerodrome 3 NM SOUTH-EAST of Zvartnots aerodrome when approaching RWY 26.

AERONAUTICAL DATA TABULATION

Point Identifier	Fix/point	Coordinates
ZVR	ZVRDVOR/DME	40 08 49.1N 044 20 17.1E
Point A	R 128°/2.1 NM ZVR	40 07 22.1N 044 22 10.9E
Point B	R 098°/5.8 NM ZVR	40 07 22.1N 044 27 35.1E
Point C	R 128°/3.8 NM ZVR	40 06 06.5N 044 23 49.7E
Point D	R 106°/6.9 NM ZVR	40 06 07.0N 044 28 34.0E
Point F	R 083°/6.4 NM ZVR	40 08 50.9N 044 28 34.0E
RWY26	THR RWY 26	40 08 50.60N 044 25 06.48E

PAGE INTENTIONALLY LEFT BLANK

RNP Z RWY26 INSTRUMENT APPROACH (LNAV only)

Route Data

Coding Table From IAF LUMIK

Path Terminator	Waypoint				Course/Track Mag (True)	DIST NM	Turn Direction	Constraints		Navigation Specification	Remarks
	Identifier	Type	Fly-Over	Coordinates				IAS	Level		
IF	LUMIK	IAF	N	N 40 01 59.6 E 044 40 36.8					A9200+	RNP APCH	
TF	YZ521	TF	N	N 40 02 00.5 E 044 47 07.4	083° (T089.8°)	5.0		K190-	A8000+	RNP APCH	
TF	YZ520	IF	N	N 40 05 30.7 E 044 47 05.7	353° (T359.6)	3.5	L	K190-	A8000+	RNP APCH	
TF	YZ515	TF	N	N 40 08 55.0 E 044 45 57.2	339° (T345.6°)	3.5	L	K190-	A8000+	RNP APCH	
TF	BASRU	FAF	N	N 40 08 54.6 E 044 42 41.6	263° (T269.8°)	2.5	L	K190-	A7900+	RNP APCH	

Coding Table For Final Approach / Missed Approach Segment

Path Terminator	Waypoint				Course/Track Mag (True)	DIST NM/Time	Turn Direction	Constraints		Navigation Specification	Remarks
	Identifier	Type	Fly-Over	Coordinates				IAS	Level		
TF	BASRU	FAF	N	N 40 08 54.6 E 044 42 41.6				K190-	A7900+	RNP APCH	
TF	RWY26	MAPt	Y	N 40 08 50.6 E 044 25 06.5	263° (T269.8°)	13.5			A2888+	RNP APCH	
TF	YZ505	MATF	Y	N 40 08 48.0 E 044 17 17.0	263° (T269.6°)	6.0		K180-	A4300+	RNP APCH	
DF	LUMIK	MAHF	N	N 40 01 59.6 E 044 40 36.8			L	K210-	A9200+	RNP APCH	
HM	LUMIK	MAHF	N	N 40 01 59.6 E 044 40 36.8	083° (T089.8°)	1 Min	L	K215-	A9200+	RNP APCH	HM

PAGE INTENTIONALLY LEFT BLANK

RNP Z RWY26 INSTRUMENT APPROACH (LNAV only)**Waypoint Data/ List**

WPT Name	CODING		DISPLAY	
LUMIK (IAF,MAHF)	N 40 01 59.6	E 044 40 36.8	N 40 02.0	E 044 40.6
YZ521(TF)	N 40 02 00.5	E 044 47 07.4	N 40 02.0	E 044 47.1
YZ520(IF)	N 40 05 30.7	E 044 47 05.7	N 40 05.5	E 044 47.1
YZ515(TF)	N 40 08 55.0	E 044 45 57.2	N 40 08.9	E 044 45.9
BASRU(FAF)	N 40 08 54.6	E 044 42 41.6	N 40 08.9	E 044 42.7
RW26 (MAPt)	N 40 08 50.6	E 044 25 06.5	N 40 08.8	E 044 25.1
YZ505 (MATF)	N 40 08 48.0	E 044 17 17.0	N 40 08.8	E 044 17.3

PAGE INTENTIONALLY LEFT BLANK

INSTRUMENT APPROACH CHART - ICAO

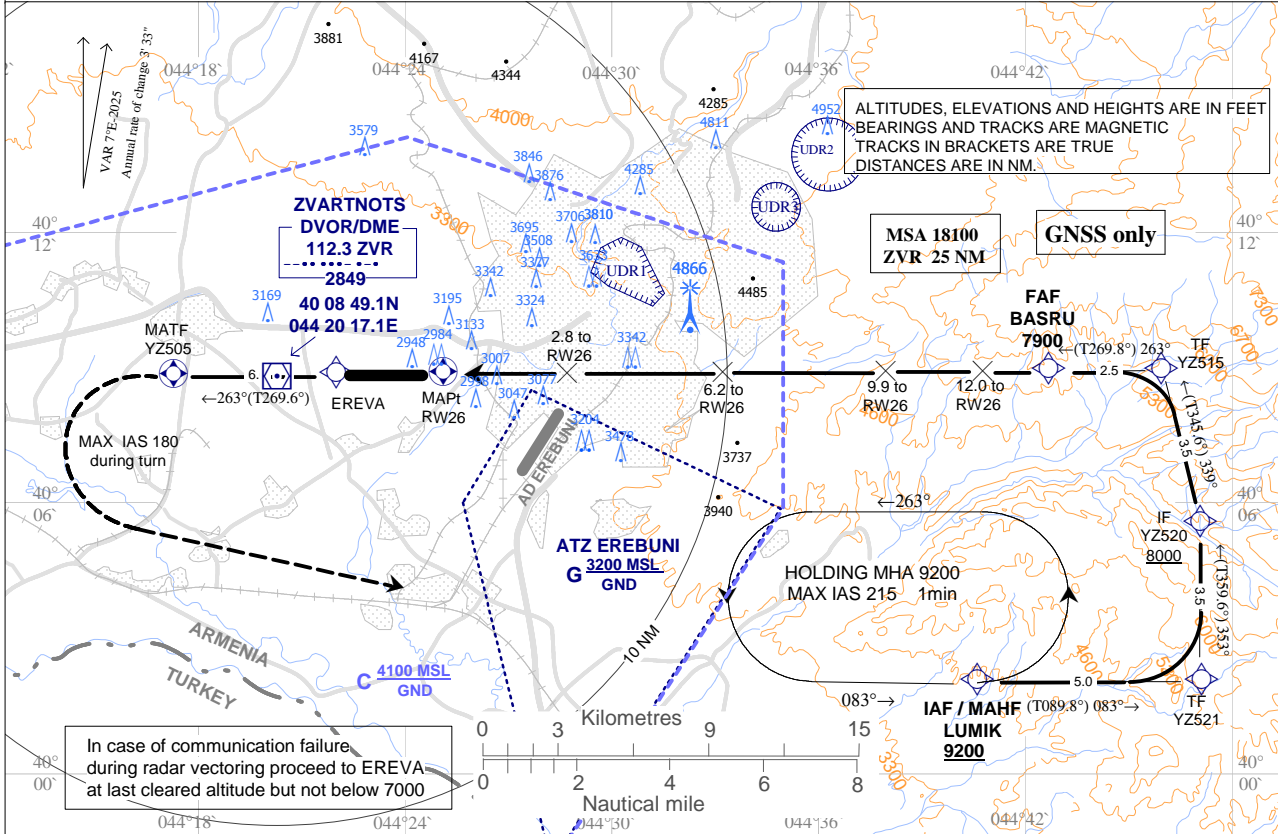
YEREVAN / Zvartnots

TRANSITION LEVEL By ATC
TRANSITION ALTITUDE 11500

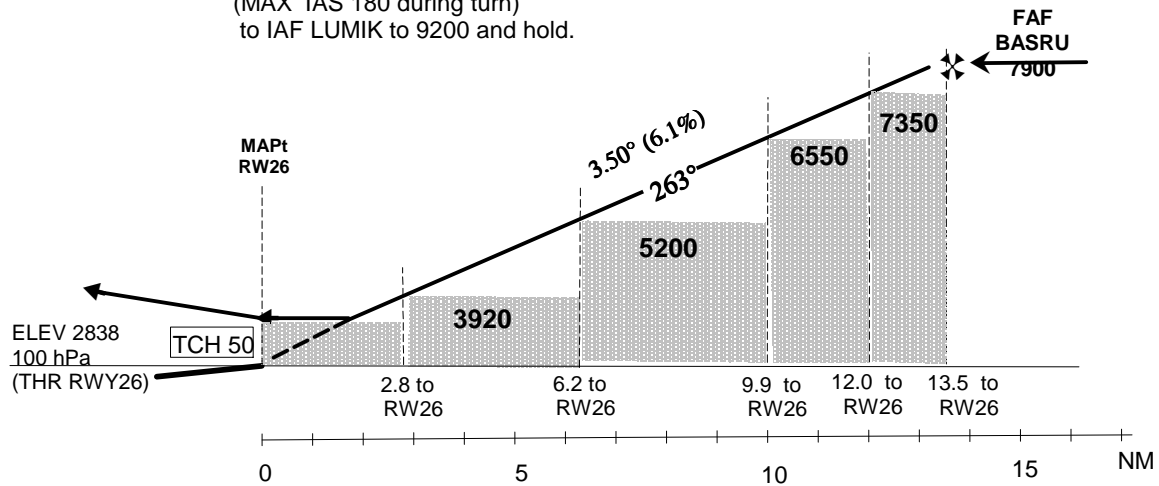
AD ELEV 2838
HEIGHTS RELATED TO
THR RWY 26 ELEV 2838

ATIS 119.5
YEREVAN / APP 126.0
YEREVAN / TOWER 128.0
YEREVAN / GROUND 119.0

**RNP Z RWY26
(LNAV only)**



MISSED APCH - Climb straight ahead to YZ505 then turn left (MAX IAS 180 during turn) to IAF LUMIK to 9200 and hold.



Cat of ACFT	OCA (OCH)			
	A	B	C	D
LNAV Climb Grad. min 3.2%	3400 (560)			
LNAV Climb Grad. min 2.5%	4600 (1760)			

Timing not authorized for defining the MAPt.						
Ground Speed	kt	120	140	160	180	200
	BASRU - RW26 MAPt	ft / min	740	870	990	1120
min : sec		6:45	5:47	5:04	4:30	4:03

DIST THR/ RW26	NM	13.5	12	10	8	6	4	2
ALTITUDE	ft	7900	7350	6610	5860	5120	4380	3630

CHANGE: UDRS

PAGE INTENTIONALLY LEFT BLANK

RNP Y RWY26 INSTRUMENT APPROACH (LNAV only)

Route Data

Coding Table From IAF LUMIK

Path Terminator	Waypoint				Course/ Track Mag (True)	DIST NM	Turn Direction	Constraints		Navigation Specification	Remarks
	Identifier	Type	Fly- Over	Coordinates				IAS	Level		
IF	LUMIK	IAF	N	N40 01 59.6 E044 40 36.8					A9200+	RNP APCH	
TF	YZ007	TF	N	N40 04 49.8 E044 40 39.4	354° (T000.7°)	2.8		K195-	A8000+	RNP APCH	
TF	YZ005	TF	N	N40 06 44.5 E 044 37 53.1	305° (T312.0°)	2.9	L	K185-	A6800+	RNP APCH	
TF	YZ001	IF	N	N40 08 02.5 E044 35 59.9	305° (T312.0°)	1.9		K185-	A5900+	RNP APCH	
RF	AGUGO	FAF	N	N40 08 52.8 E044 33 13.3		2.3	L	K185-	A5200+	RNP APCH	YZ008 (ARC CENTRE)

Coding Table For Final Approach / Missed Approach Segment

Path Terminator	Waypoint				Course/ Track Mag (True)	DIST NM/ Time	Turn Direction	Constraints		Navigation Specification	Remarks
	Identifier	Type	Fly- Over	Coordinates				IAS	Level		
IF	AGUGO	FAF	N	N40 08 52.8 E044 33 13.3				K185-	A5200+	RNP APCH	
TF	RWY26	MAPt	Y	N40 08 50.6 E 044 25 06.5	263° (T269.7°)	6.2		K185-	A2888+	RNP APCH	
TF	YZ505	MATF	Y	N40 08 48.0 E 044 17 17.0	263 (T269.7°)	6.0		K180-	A3800+	RNP APCH	
DF	LUMIK	MAHF	N	N40 01 59.6 E044 40 36.8			L	K210-	A9200+	RNP APCH	
HM	LUMIK	MAHF	N	N40 01 59.6 E044 40 36.8	083° (T089.8°)	1 Min	L	K215-	A9200+	RNP APCH	HM
ARC Centre Waypoint											
ARC Centre Waypoint		Coordinates			ARC Radius (NM)			Remarks			
YZ008		N40 05 36.1 E044 33 08.8			3.28						

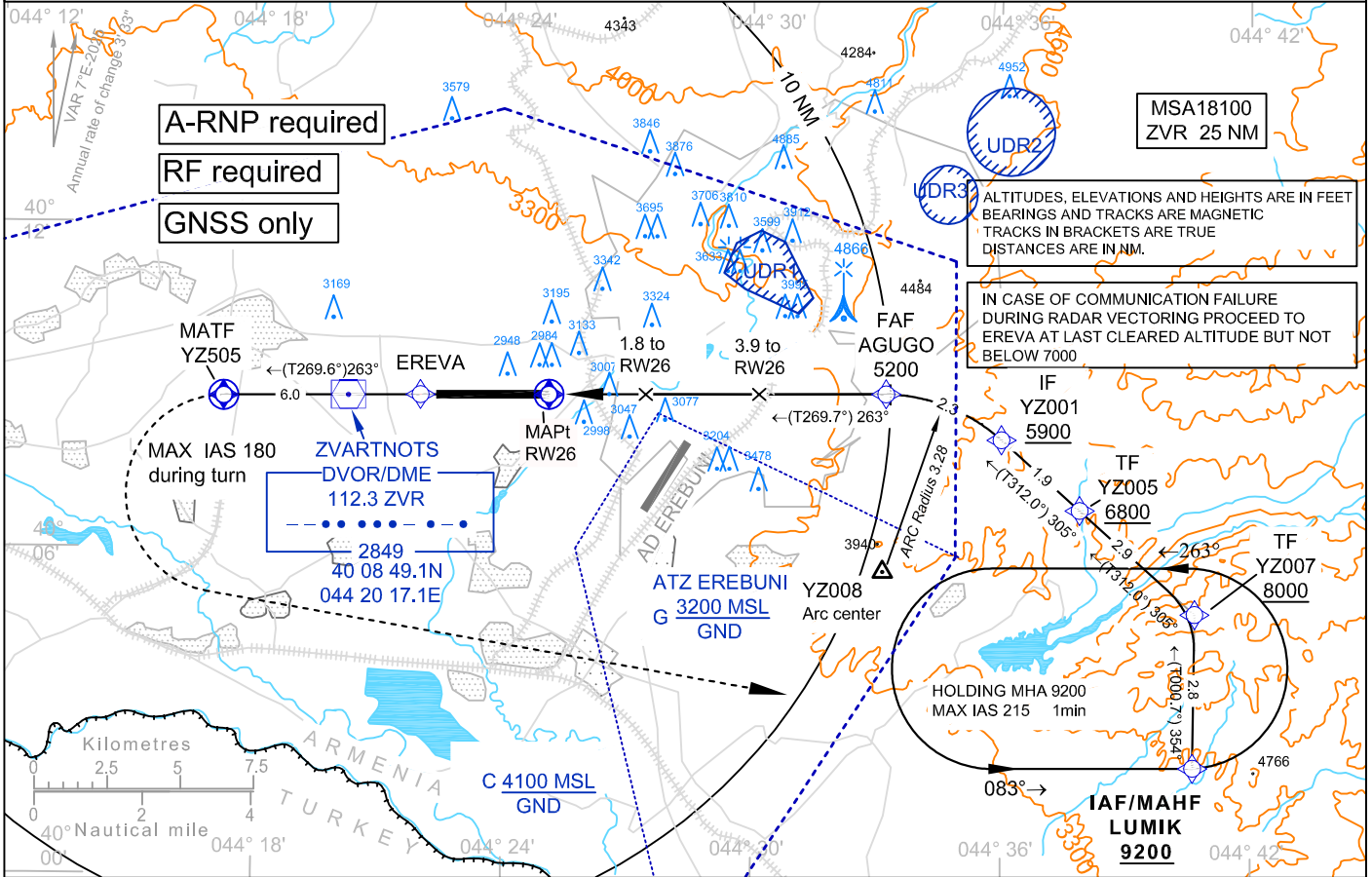
PAGE INTENTIONALLY LEFT BLANK

RNP(GNSS) Y RWY26 INSTRUMENT APPROACH (LNAV only)**Waypoint Data/ List**

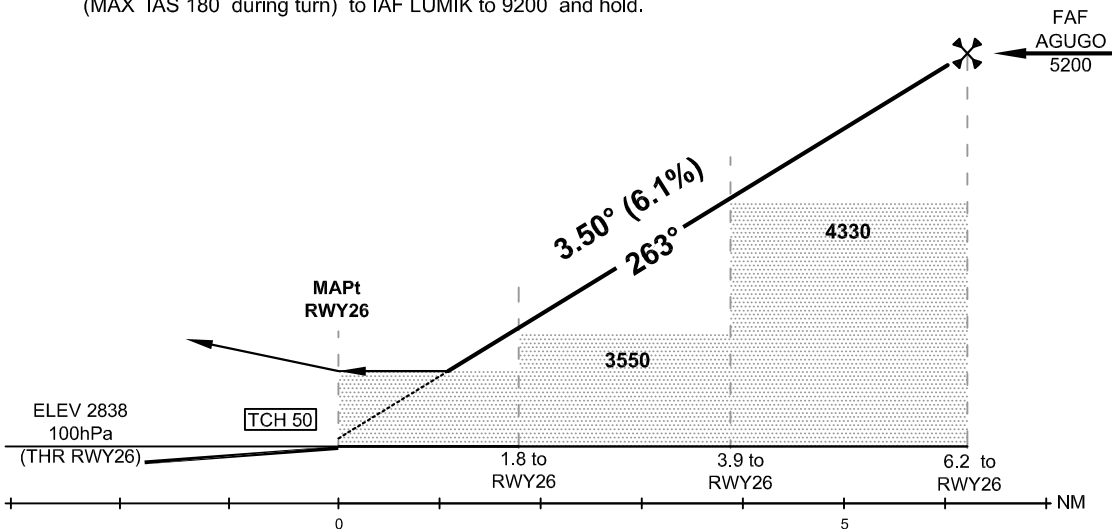
WPT Name	CODING		DISPLAY	
LUMIK (IAF,MAHF)	N 40 01 59.5933	E 044 40 36.8356	N 40 02.0	E 044 40.6
YZ007(TF)	N 40 04 49.7556	E 044 40 39.3871	N 40 04.8	E 044 40.7
YZ005(TF)	N 40 06 44.5112	E 044 37 53.0921	N 40 06.7	E 044 37.9
YZ001 (IF)	N 40 08 02.5099	E 044 35 59.9207	N 40 08.0	E 044 36.0
AGUGO (FAF)	N 40 08 52.7655	E 044 33 13.2879	N 40 08.9	E 044 13.2
RW26 (MAPt)	N 40 08 50.6001	E 044 25 06.4798	N 40 08.8	E 044 25.1
YZ505 (MATF)	N 40 08 47.9734	E 044 17 17.0232	N 40 08.8	E 044 17.3
YZ008 (Arc center)	N 40 05 36.0530	E 044 33 08.8176	N 40 05.6	E 044 33.1

PAGE INTENTIONALLY LEFT BLANK

INSTRUMENT APPROACH CHART - ICAO	AD ELEV 2838 HEIGHTS RELATED TO THR RWY 26 ELEV 2838	ATIS 119.5 YEREVAN / APP 126.0 YEREVAN / TOWER 128.0 YEREVAN / GROUND 119.0	YEREVAN / Zvartnots RNP Y RWY26 (LNAV only)
TRANSITION LEVEL By ATC TRANSITION ALTITUDE 11500			



MISSED APCH - Climb straight ahead to YZ505 then turn left (MAX IAS 180 during turn) to IAF LUMIK to 9200 and hold.



OCA (OCH)				
Cat of ACFT	A	B	C	D
LNAV	3290 (452)			

Timing not authorized for defining the MAPt						
Ground Speed	kt	120	140	160	180	200
AGUGO - RWY26 MAPt	ft / min	740	870	990	1120	1240
	min:sec	3:07	2:40	2:20	2:04	1:52

DIST THR / RWY26	NM	6.2	4	2
ALTITUDE	ft	5200	4380	3630

CHANGE: UDRs

PAGE INTENTIONALLY LEFT BLANK

PAGE INTENTIONALLY LEFT BLANK